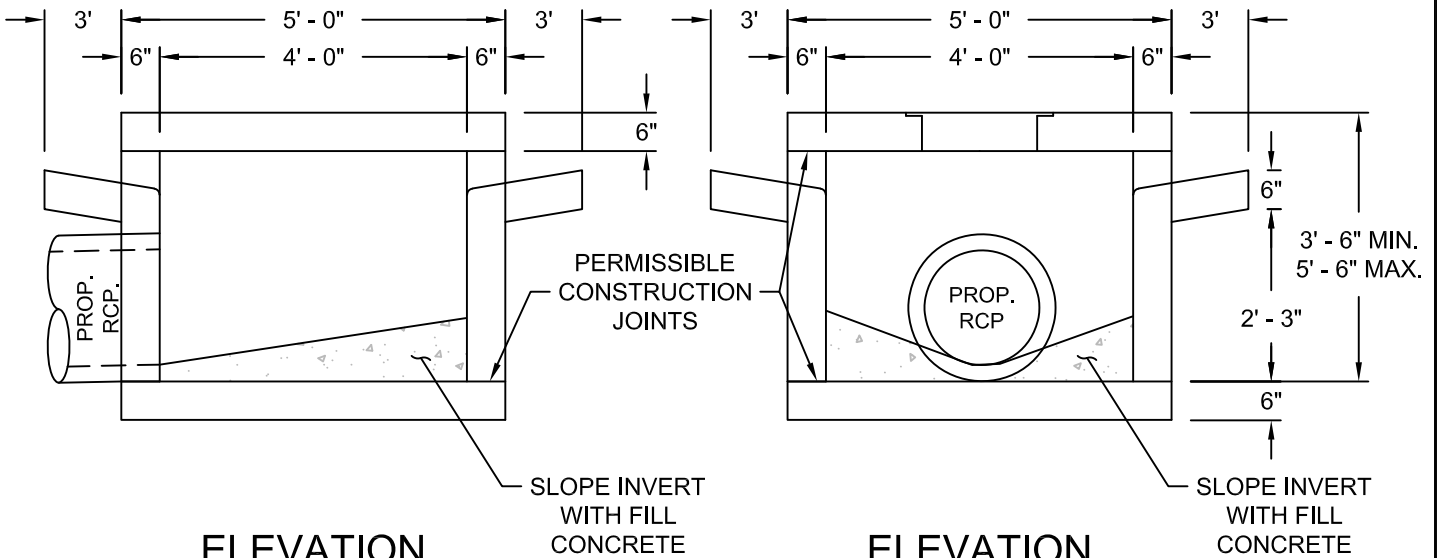


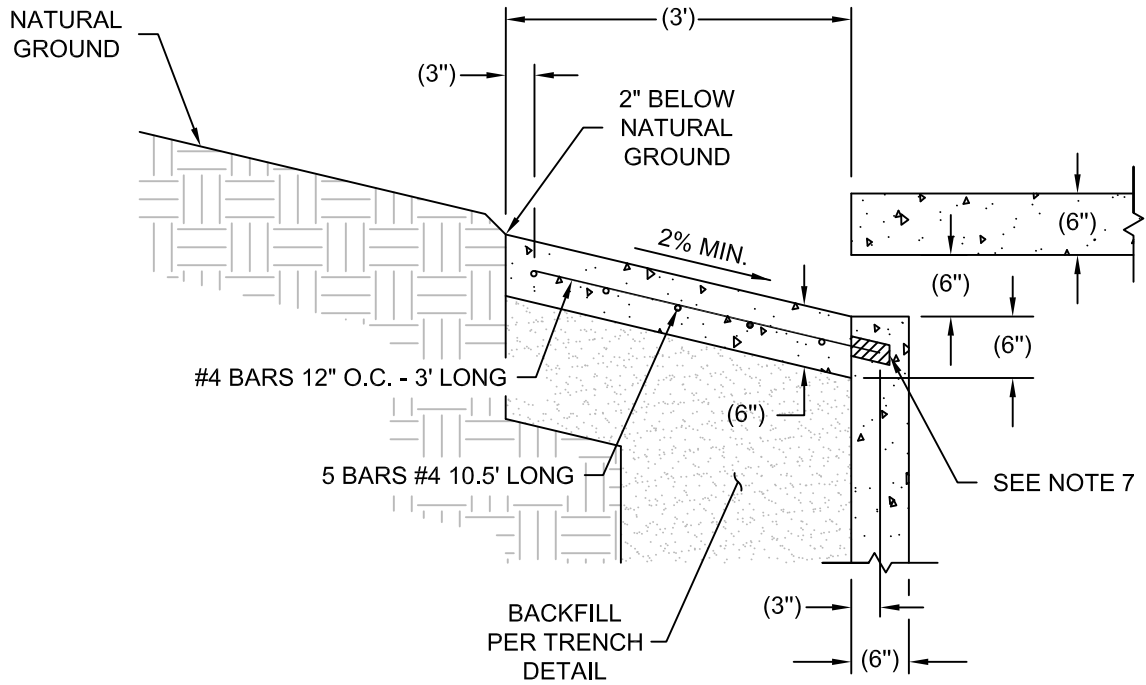
PLAN VIEW



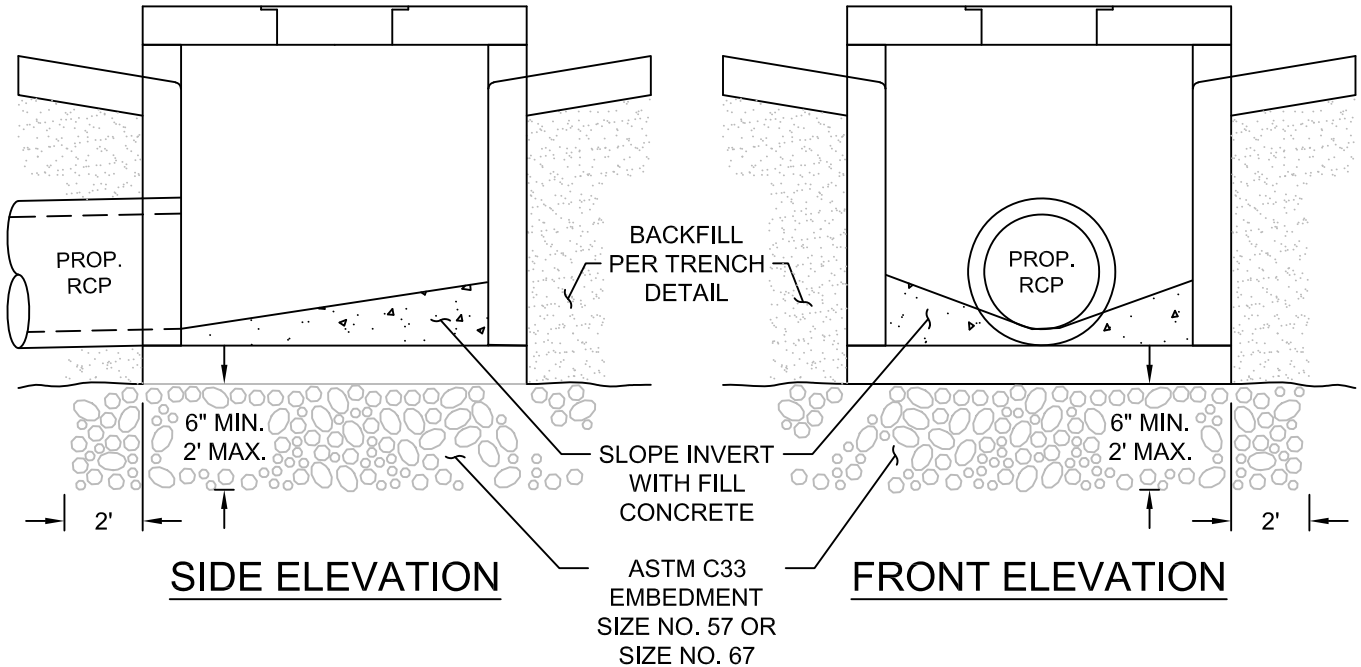
ELEVATION
SECTION A-A

ELEVATION
SECTION B-B

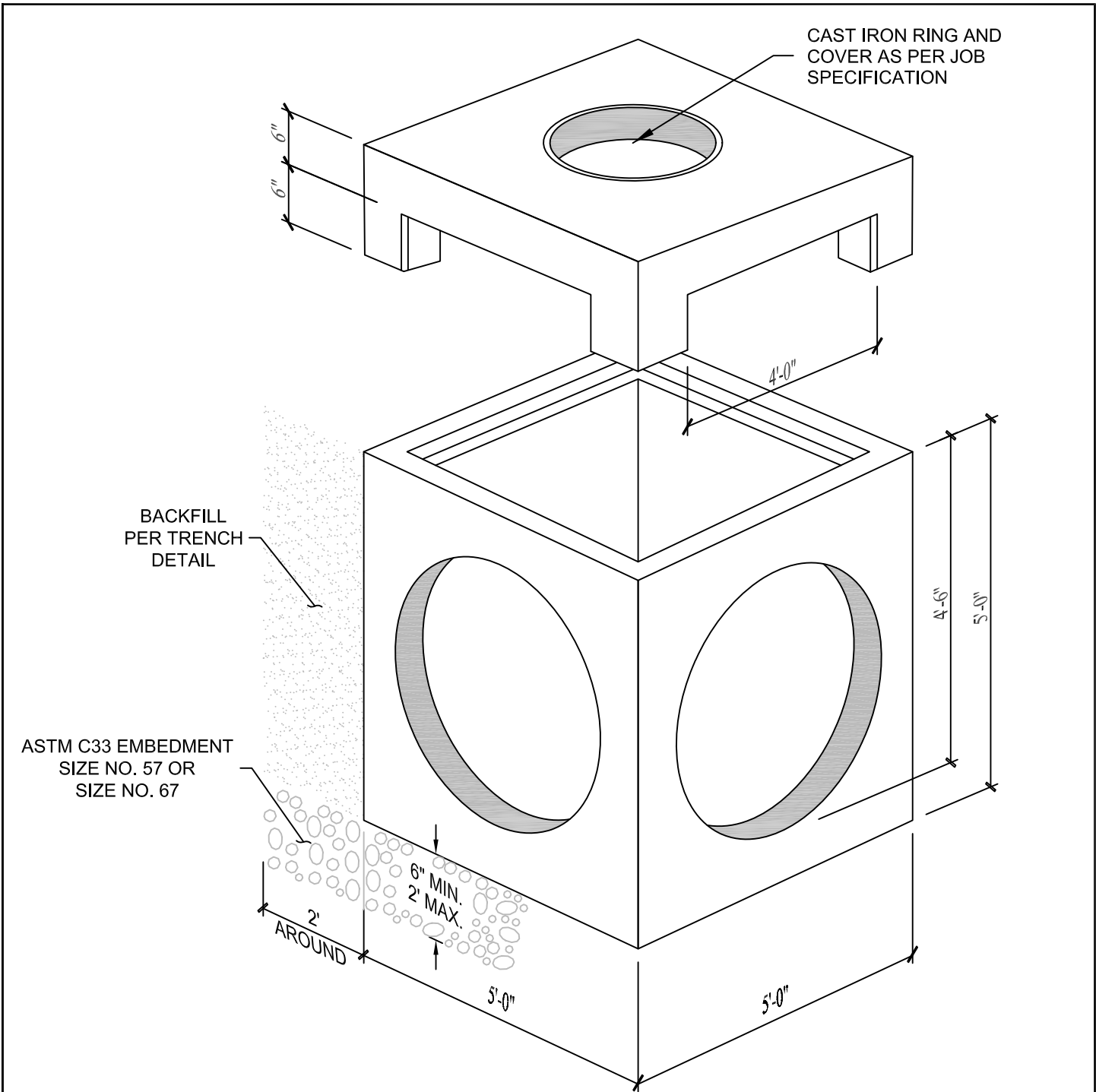
<p>The City of San Marcos Engineering and Capital Improvements</p>	<p>CURRENT AS OF 1/1/2021</p>	<p>PRECAST 4-SIDED AREA INLET</p>	
<p>RECORD COPY SIGNED BY LAURIE MOYER, P.E.</p>	<p>1/1/2021 ADOPTED</p>	<p>THE ARCHITECT/ENGINEER ASSUMES RESPONSIBILITY FOR APPROPRIATE USE OF THIS STANDARD.</p>	<p>STANDARD NO. 508S-9-SM 1 OF 3</p>



INLET OPENING



<p>The City of San Marcos Engineering and Capital Improvements</p>	<p>CURRENT AS OF 1/1/2021</p>	<p>PRECAST 4-SIDED AREA INLET</p>	
<p>RECORD COPY SIGNED BY LAURIE MOYER, P.E.</p>	<p>1/1/2021 ADOPTED</p>	<p>THE ARCHITECT/ENGINEER ASSUMES RESPONSIBILITY FOR APPROPRIATE USE OF THIS STANDARD.</p>	<p>STANDARD NO. 508S-9-SM 2 OF 3</p>



NOTES:

1. REBAR PLACEMENT WILL BE PER MANUFACTURERS RECOMMENDATION. IF POSSIBLE TRAFFIC LOADS DESIGN MUST MEET HS-20 MINIMUM BEARING CAPACITY. CAST IN PLACE MUST BE SUBMITTED & SEALED BY DESIGN ENGINEER.
2. ALL CUT STEEL SHALL BE REPLACED WITH ADDITIONAL DIAGONAL BARS OF THE SAME DIAMETER.
3. INLET RING AND COVER SHALL BE IN ACCORDANCE WITH CITY OF SAN MARCOS STANDARD 503S-2S-SM.
4. CONCRETE COVERAGE OF STEEL SHALL BE 2" MIN. AT ALL SURFACES.
5. ALL MEASUREMENTS ARE MINIMUM UNLESS OTHERWISE NOTED.
6. CONSULT MANUFACTURER BEFORE HANDLING.
7. DRILL 3" DEEP HOLES (5/8" DIA.) AT 12" O.C.

The City of San Marcos Engineering and Capital Improvements	CURRENT AS OF 1/1/2021	PRECAST 4-SIDED AREA INLET	
RECORD COPY SIGNED BY <hr/> LAURIE MOYER, P.E.	1/1/2021 <hr/> ADOPTED	THE ARCHITECT/ENGINEER ASSUMES RESPONSIBILITY FOR APPROPRIATE USE OF THIS STANDARD.	STANDARD NO. 508S-9-SM 3 OF 3