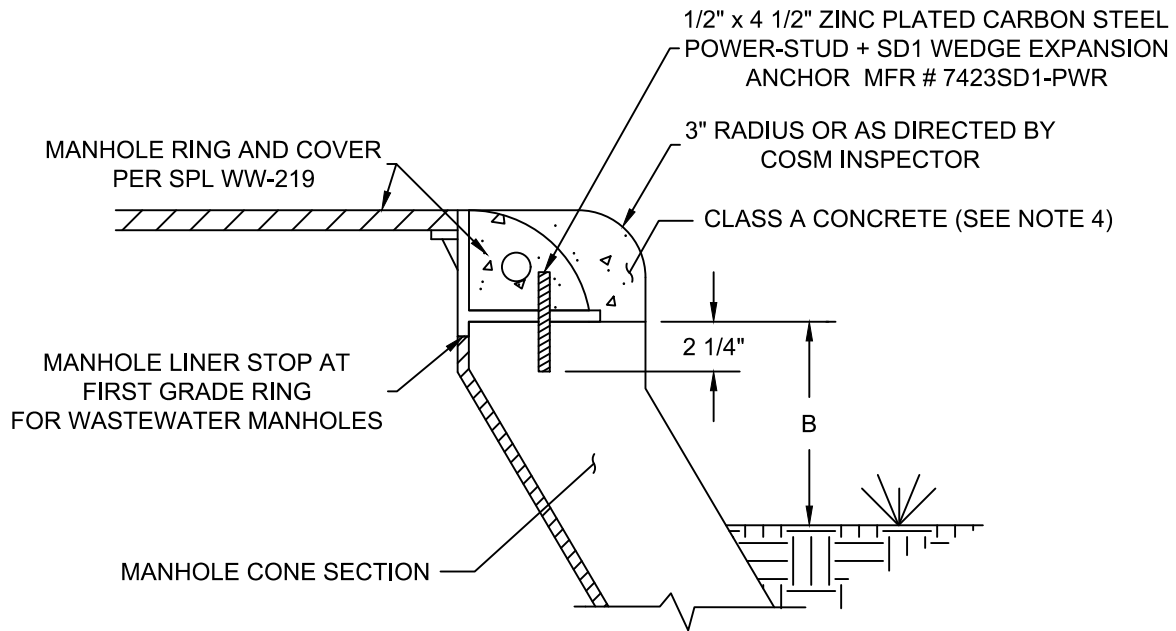


IN PAVEMENT



OUTSIDE PAVEMENT

NOTES:

1. IF MANHOLE IS WITHIN THE 100-YEAR FLOODPLAIN, USE BOLTED AND GASKET LIDS.
2. DIMENSION B = (6"-12" TO FINISH GRADE) FOR MANHOLE LOCATED IN THE 100-YR FLOOD PLAN.
= (2"-12" TO FINISH GRADE) FOR MANHOLE OUTSIDE THE 100-YR FLOOD PLAN.
3. MANUFACTURES SHALL VERIFY DIMENSION AGAINST RING AND COVER SPECIFIED.
4. INSPECTOR MAY APPROVE THE USE OF CONCRETE BAG PER SPL WW-704 AT THE INSPECTORS DISCRETION.

REFERENCES

DETAIL 1100S-1-SM

The City of San Marcos Engineering and Capital Improvements		CURRENT AS OF 1/1/2021	MINOR MANHOLE ADJUSTMENT & NEW MANHOLE CONSTRUCTION	
RECORD COPY SIGNED BY LAURIE MOYER, P.E.	1/1/2020 ADOPTED	THE ARCHITECT/ENGINEER ASSUMES RESPONSIBILITY FOR APPROPRIATE USE OF THIS STANDARD.		STANDARD NO. 506S-4A-SM 1 OF 1