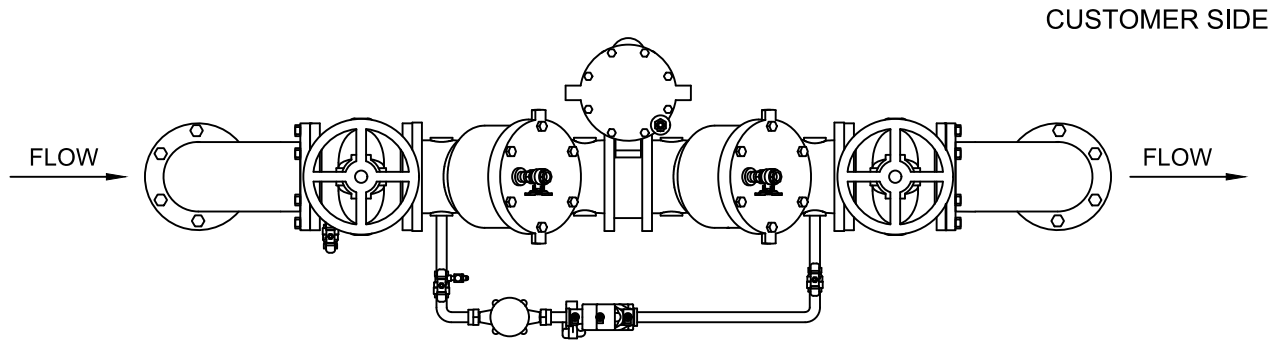
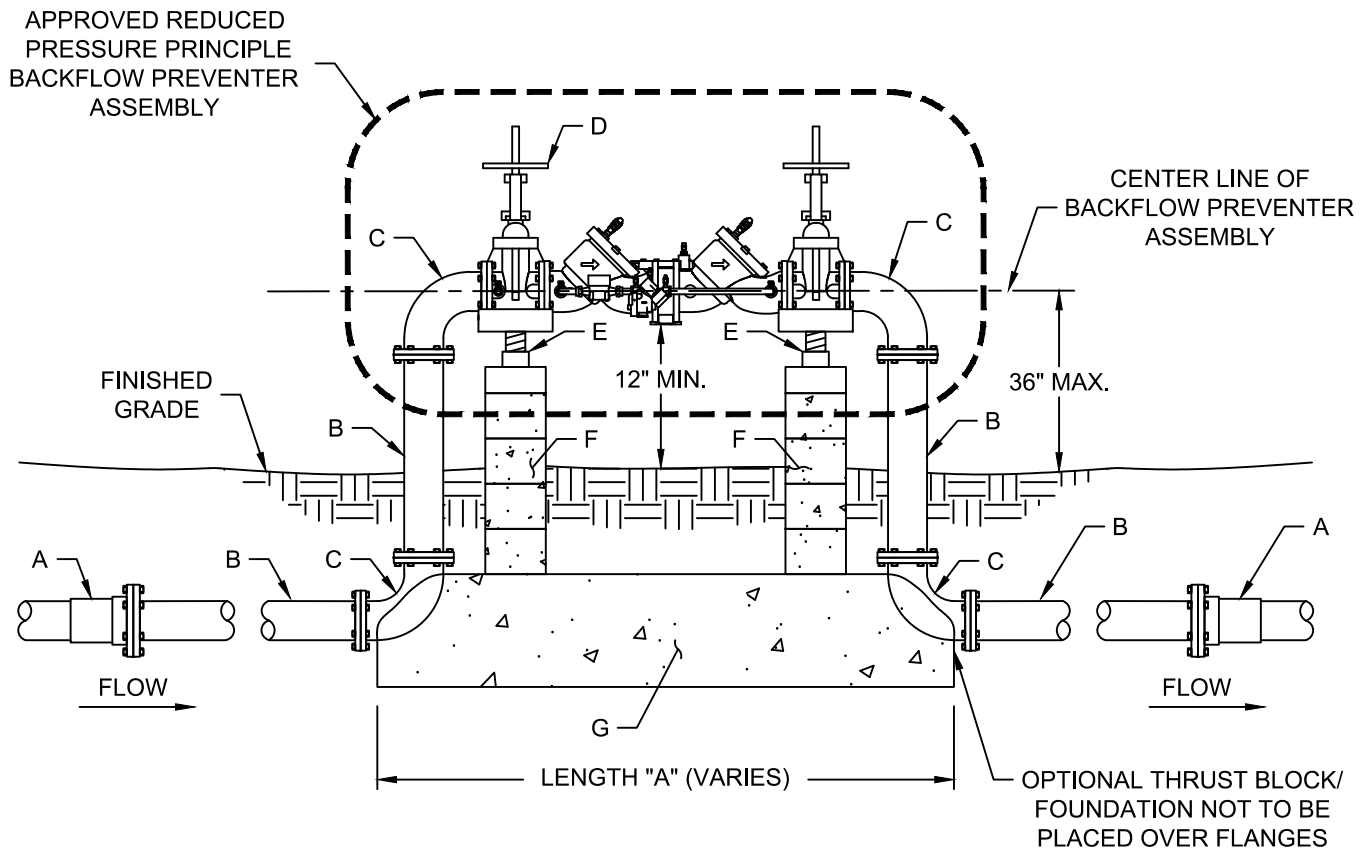


PROPERTY LINE OR EASEMENT



PLAN VIEW
(ABOVE GROUND)

PROPERTY LINE OR EASEMENT



PROFILE VIEW
(ABOVE GROUND)

REDUCED PRESSURE PRINCIPLE DETECTOR ASSEMBLY IS NOT ALLOWED BELOW GROUND.

<p>The City of San Marcos Engineering and Capital Improvements</p>	<p>CURRENT AS OF 1/1/2021</p>	<p>REDUCED PRESSURE PRINCIPLE DETECTOR ASSEMBLY 3"-10"</p>	
<p>RECORD COPY SIGNED BY LAURIE MOYER, P.E.</p>	<p>6/2/2017 ADOPTED</p>	<p>THE ARCHITECT/ENGINEER ASSUMES RESPONSIBILITY FOR APPROPRIATE USE OF THIS STANDARD.</p>	<p>STANDARD NO. 520S-19G-SM 1 OF 2</p>

RECOMMENDED MATERIALS LIST

LABEL	ITEM	SIZE				
	BACKFLOW PREVENTER SIZE	3"	4"	6"	8"	10"
A	FLANGED ADAPTER (WHEN REQUIRED)	3"	4"	6"	8"	10"
B	PIPE SPOOL FLANGED D.I.P.	3"	4"	6"	8"	10"
C	90° ELBOW FLANGED D.I.P.	3"	4"	6"	8"	10"
D	RESILIENT SEATED GATE VALVE. RISING STEM VALVE FOR FIRE LINE CONNECTION AND NON-RISING STEM VALVE FOR NON FIRE LINE CONNECTION.	3"	4"	6"	8"	10"
OPTIONAL ITEMS						
E	ADJUSTABLE METAL PIPE SUPPORT WITH 1" ADJUSTING ROD	OPTIONAL				
F	8"X8"X8" CONCRETE BLOCKS WITH MORTAR (TOTAL NUMBER OF BLOCKS VARIES ON HEIGHT)	OPTIONAL				
G	16"X16"X"A" CONCRETE THRUST BLOCK/FOUNDATION (DIMENSION "A" VARIES ON SIZE OF ASSEMBLY)	OPTIONAL				

NOTES:

1. REDUCED PRESSURE PRINCIPLE BACKFLOW PREVENTION ASSEMBLY IS NOT ALLOWED BELOW GROUND.
2. OPTIONAL ITEMS MAY BE REQUIRED TO SUPPORT WEIGHT OF BACKFLOW PREVENTER.
3. BACKFLOW PREVENTER MUST BE PROTECTED FROM WEATHER.
4. BACKFLOW PREVENTER SHOULD BE AS CLOSE AS POSSIBLE TO SERVICE CONNECTION ON PROPERTY OWNER SIDE OF EASEMENT OR PROPERTY LINE.
5. DUCTILE IRON PIPING IS RECOMMEND FROM METER VAULT TO BACKFLOW PREVENTER.
6. FIRE LINES REQUIRE A DETECTOR ASSEMBLY ON THE BACKFLOW DEVICE.
7. A UNMETERED FIRE LINE WILL USE DETAIL 520S-WMT-SM WITH TAP SIZE EQUAL TO BACKFLOW PREVENTER SIZE TO CONNECT TO CITY WATER LINE.

The City of San Marcos Engineering and Capital Improvements	CURRENT AS OF 1/1/2021	REDUCED PRESSURE PRINCIPLE DETECTOR ASSEMBLY 3"-10"	
RECORD COPY SIGNED BY LAURIE MOYER, P.E.	6/2/2017 ADOPTED	THE ARCHITECT/ENGINEER ASSUMES RESPONSIBILITY FOR APPROPRIATE USE OF THIS STANDARD.	STANDARD NO. 520S-19G-SM 2 OF 2