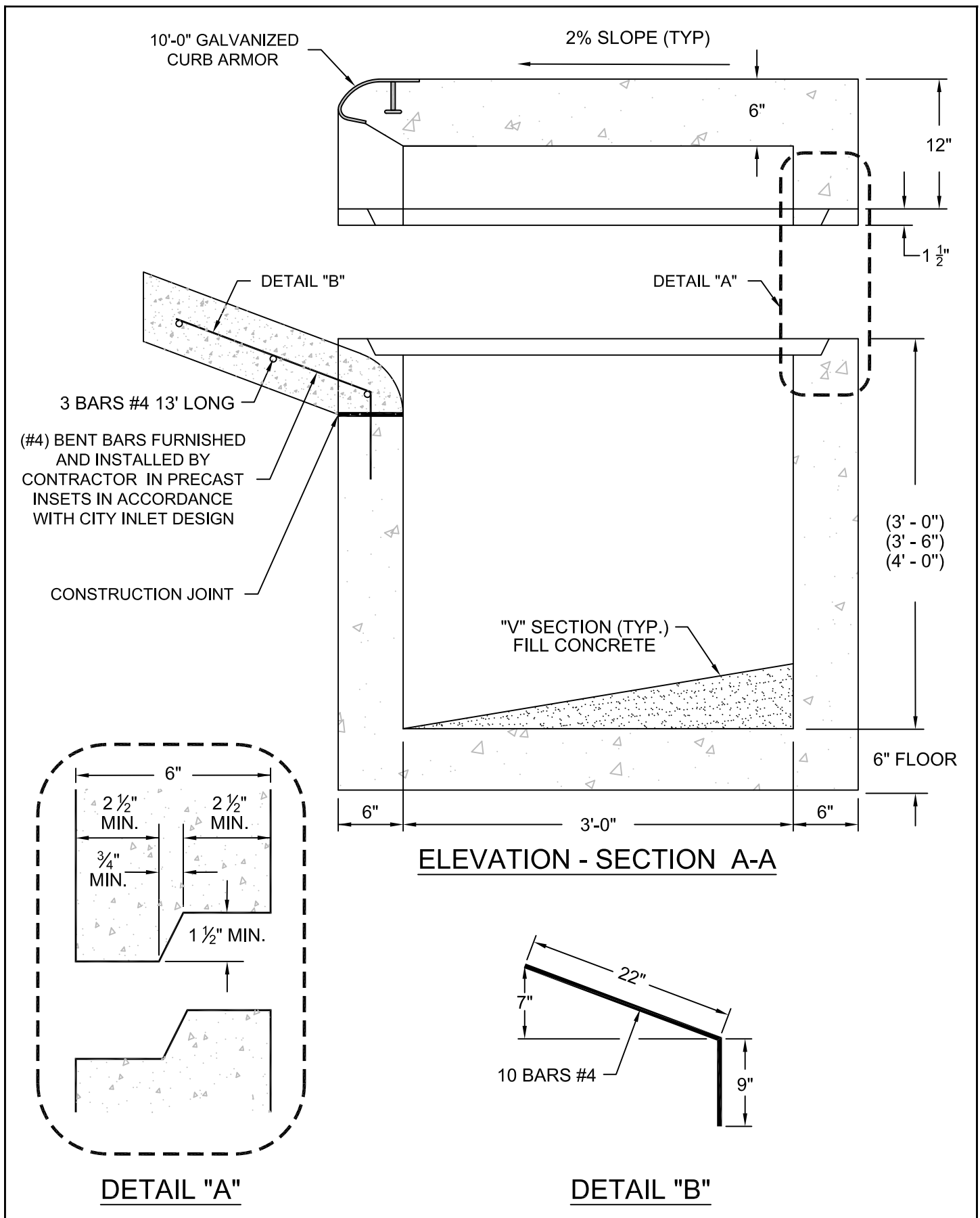
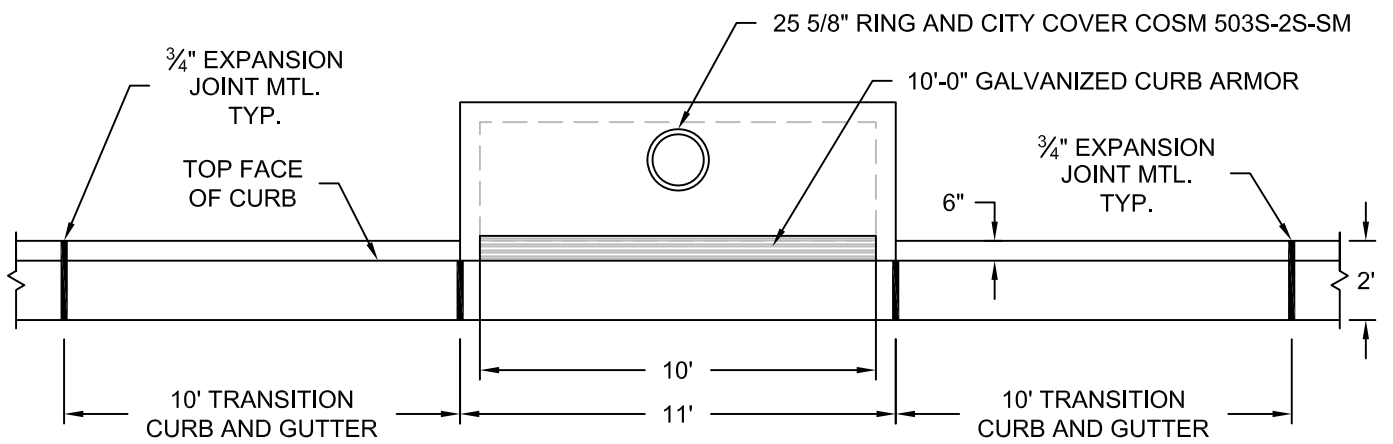


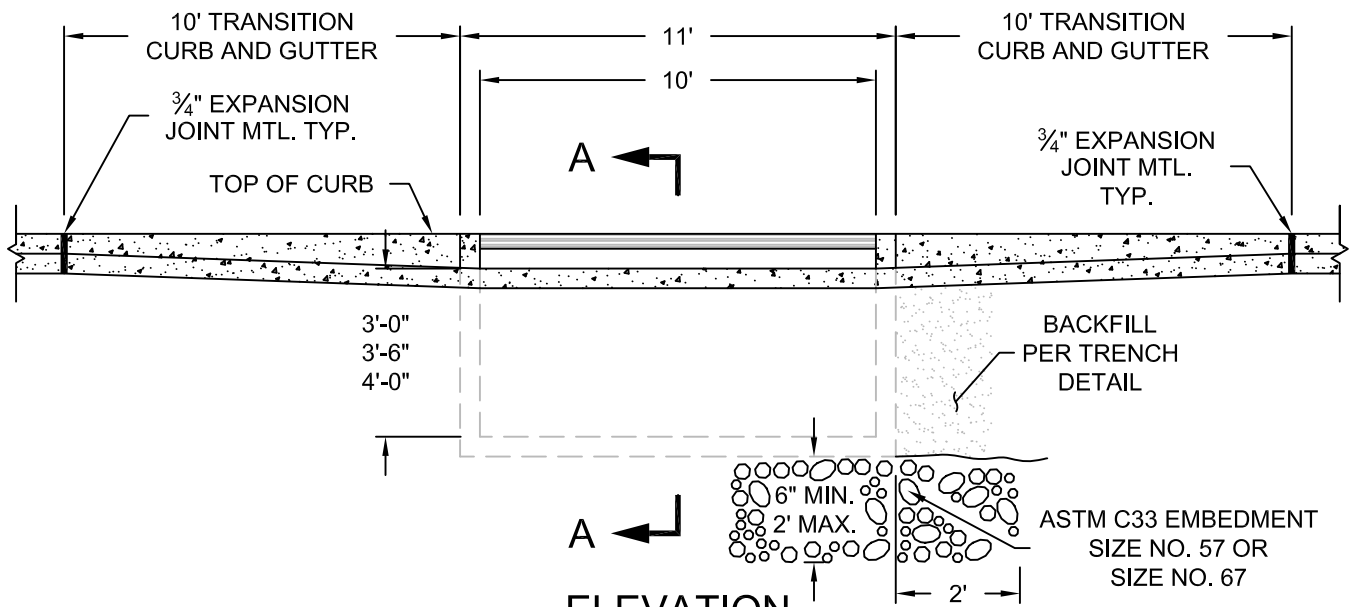
<p>The City of San Marcos Engineering and Capital Improvements</p>	<p>CURRENT AS OF 1/1/2021</p>	<p>TYPICAL PRE-CAST CURB INLET</p>	
<p>RECORD COPY SIGNED BY LAURIE MOYER, P.E.</p>	<p>1/1/2021 ADOPTED</p>	<p>THE ARCHITECT/ENGINEER ASSUMES RESPONSIBILITY FOR APPROPRIATE USE OF THIS STANDARD.</p>	<p>STANDARD NO. 508S-3-SM 1 OF 4</p>



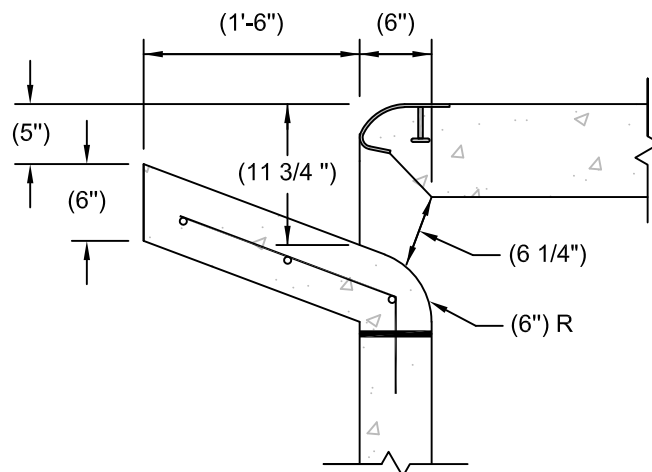
<p>The City of San Marcos Engineering and Capital Improvements</p>	<p>CURRENT AS OF 1/1/2021</p>	<p>TYPICAL PRE-CAST CURB INLET</p>	
<p>RECORD COPY SIGNED BY LAURIE MOYER, P.E.</p>	<p>1/1/2021 ADOPTED</p>	<p>THE ARCHITECT/ENGINEER ASSUMES RESPONSIBILITY FOR APPROPRIATE USE OF THIS STANDARD.</p>	<p>STANDARD NO. 508S-3-SM 2 OF 4</p>



PLAN VIEW



ELEVATION



The City of San Marcos
Engineering and Capital Improvements

CURRENT AS OF
1/1/2021

TYPICAL PRE-CAST CURB INLET

RECORD COPY SIGNED BY

1/1/2021

THE ARCHITECT/ENGINEER ASSUMES
RESPONSIBILITY FOR APPROPRIATE USE
OF THIS STANDARD.

STANDARD NO.

508S-3-SM

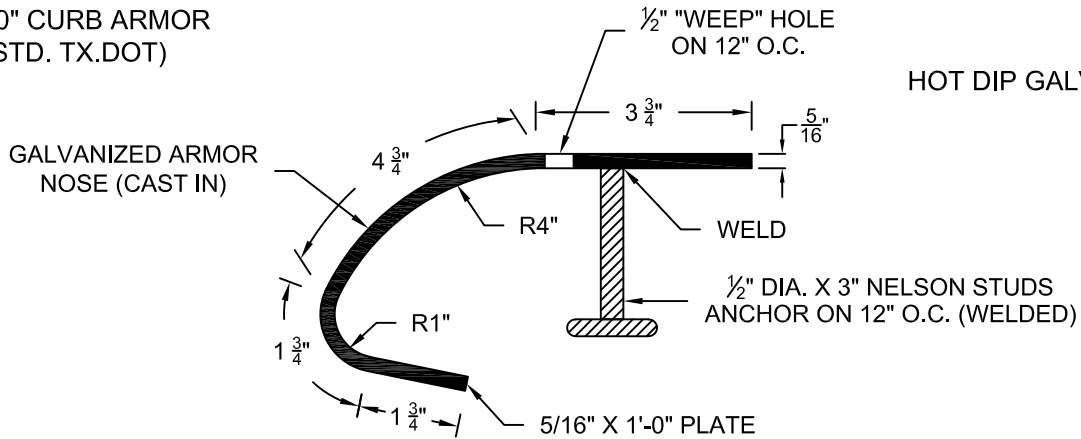
Laurie Moyer, P.E.

ADOPTED

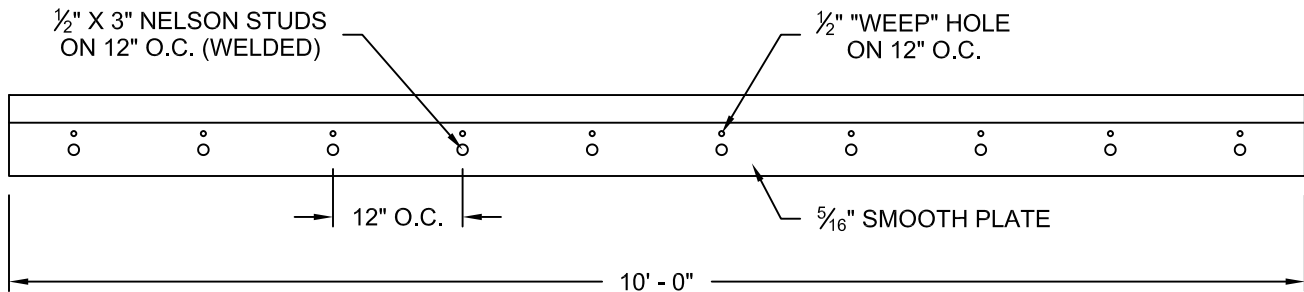
3 OF 4

10' - 0" CURB ARMOR
(STD. TX.DOT)

HOT DIP GALVANIZED



GALVANIZED ARMOR NOSE



**GALVANIZED ARMOR NOSE
PLAN VIEW**

GENERAL NOTES:

1. REINFORCING STEEL SHALL COMPLY WITH ASTM A615 GRADE 60. BAR BENDING AND PLACEMENT SHALL COMPLY WITH LATEST ACI STANDARDS. DESIGN BASED ON AASHTO HS 20 LOADING.
2. DRILL 6" DEEP HOLES (5/8" DIA.) AT 12" O.C. ON 3'-6" AND 4'-0" BASES. HOLES SHALL BE DRILLED IN THE FIELD PER THE DIRECTION OF THE CITY INSPECTOR ON 3'-0" BASES.
3. 30" DIA. TWKO'S ON FRONT AND REAR OF 10'-0" INLETS. 36"W X 30"H TWKO'S ON BOTH END WALLS OF 10'-0" INLETS.
4. CHAMFER ALL EXPOSED EDGES (3/4").
5. THE CONTRACTOR MAY PROPOSE ALTERNATE PROCEDURES FOR THE CONSTRUCTION OF INLETS, INCLUDING CAST IN PLACE UNITS. PLANS FOR SUCH SHALL BE SUBMITTED TO THE ENGINEER FOR REVIEW AND APPROVAL BEFORE CONSTRUCTION.
6. ALL CONCRETE SHALL BE CLASS "C" AS PER ITEM 403S.
7. PAYMENT FOR INLET AT THE CONTRACT PRICE SHALL INCLUDE THE TRANSITION CURB, IN ACCORDANCE WITH CITY OF SAN MARCOS STANDARD INLET DESIGN.
8. INVERT OF INLET SHALL BE SLOPED 1:20 WITH FILL CONCRETE BY CONTRACTOR, SHAPED AS "V" SECTION .
9. THIS STANDARD COMPLIES WITH COSM STANDARD SPECIFICATIONS ITEM NO. 508S.

REFERENCES

DETAIL 430S-3-SM
DETAIL 503S-1-SM

The City of San Marcos Engineering and Capital Improvements		CURRENT AS OF 1/1/2021	TYPICAL PRE-CAST CURB INLET	
RECORD COPY SIGNED BY LAURIE MOYER, P.E.		1/1/2021 ADOPTED	THE ARCHITECT/ENGINEER ASSUMES RESPONSIBILITY FOR APPROPRIATE USE OF THIS STANDARD.	STANDARD NO. 508S-3-SM 4 OF 4