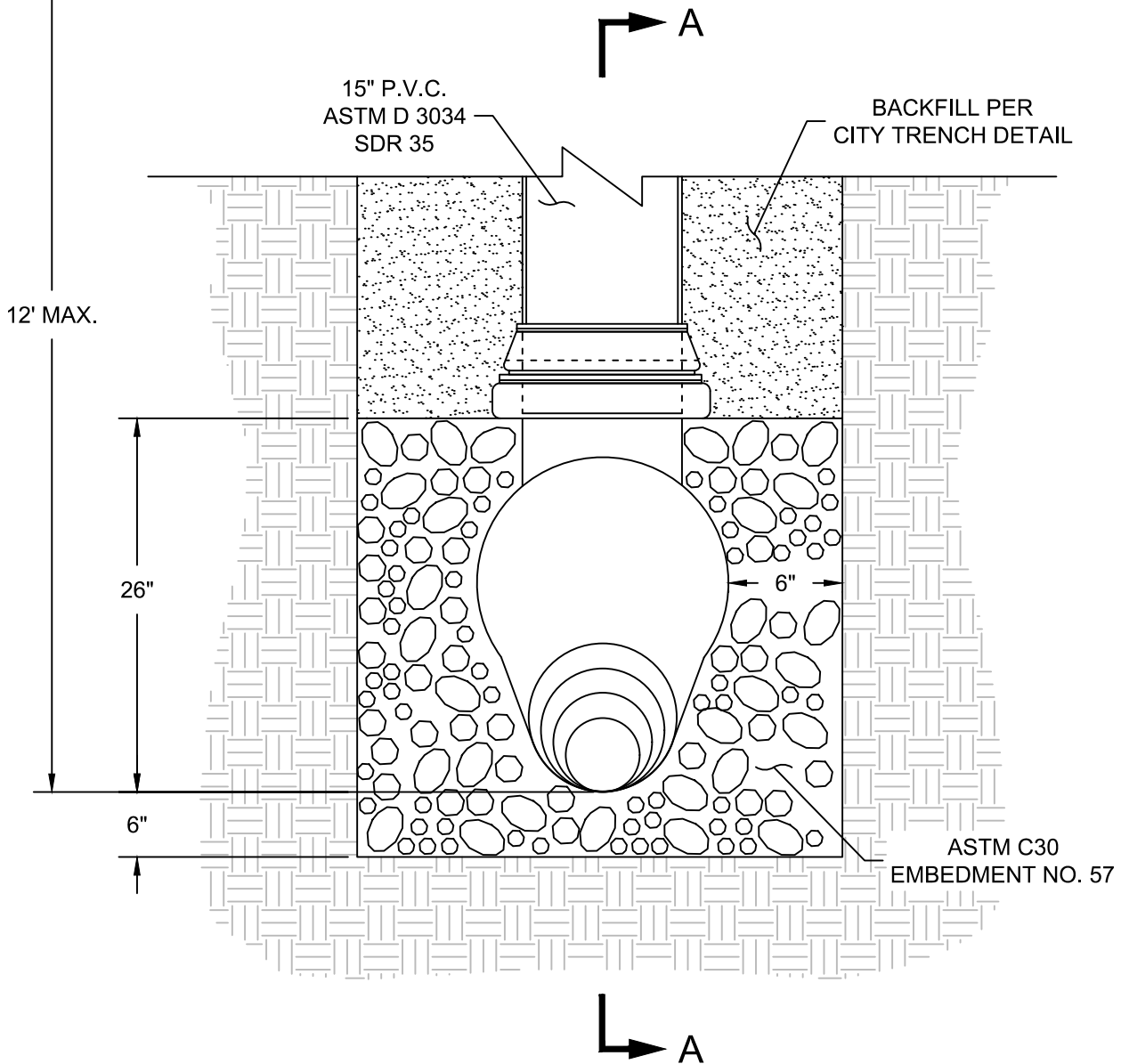
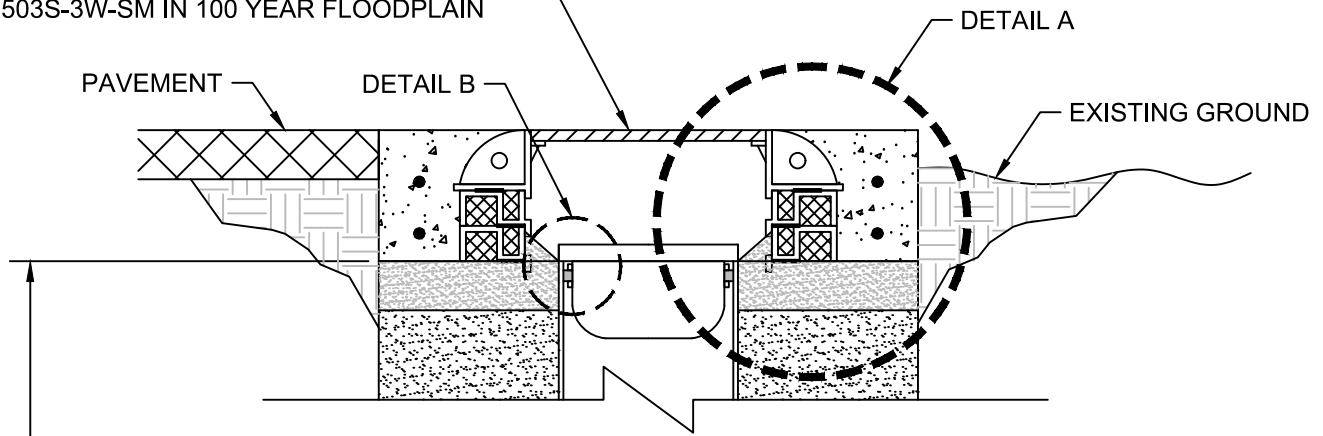
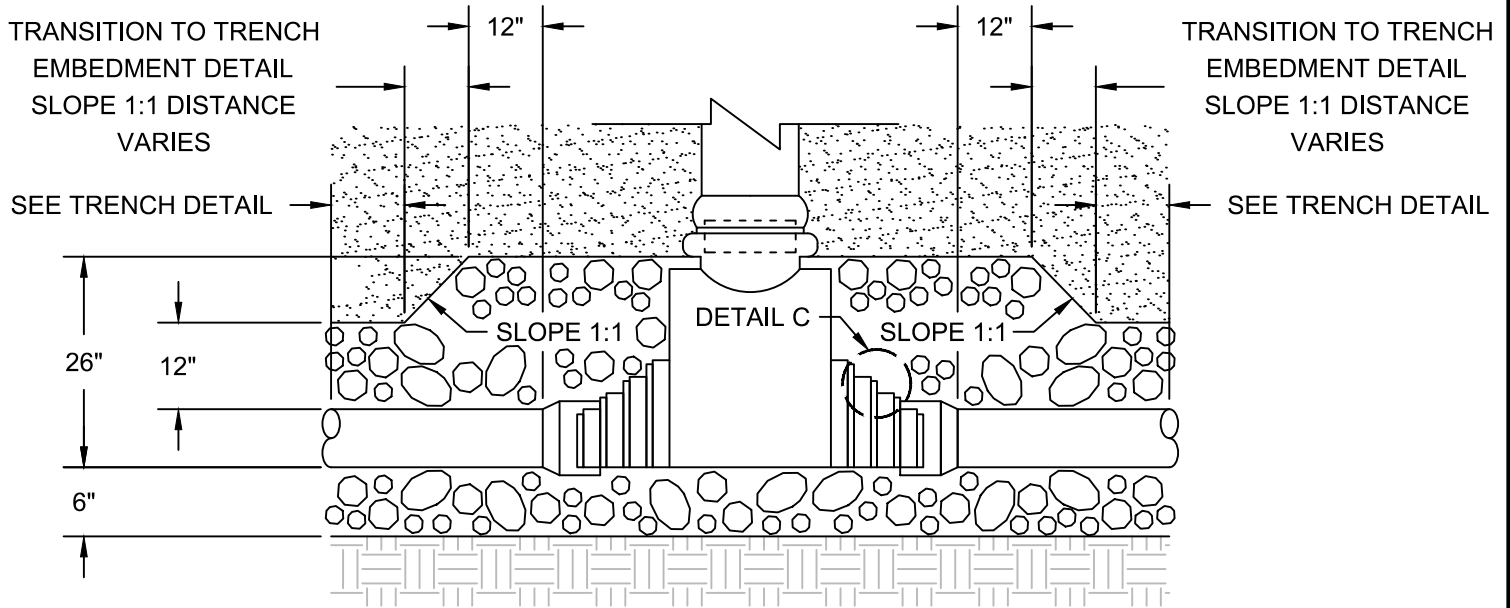


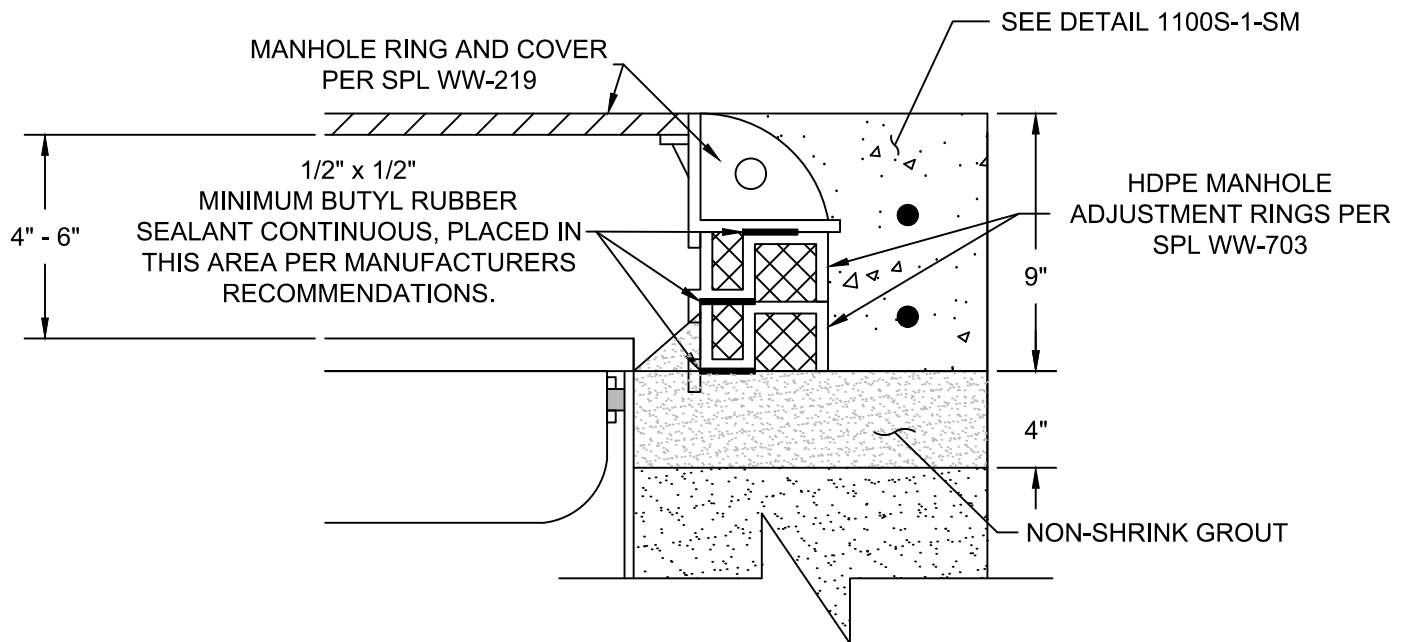
24" STANDARD CASTING  
& COVER, SEE DETAIL  
503S-2W-SM OUT OF 100 YEAR FLOODPLAIN  
503S-3W-SM IN 100 YEAR FLOODPLAIN



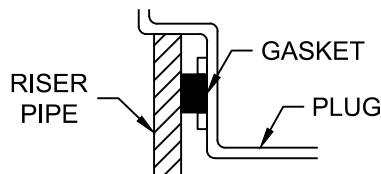
<p>The City of San Marcos Engineering and Capital Improvements</p>	<p>CURRENT AS OF 1/1/2021</p>	<p>WASTEWATER ACCESS DEVICE (W.A.D.)</p>	
<p>RECORD COPY SIGNED BY LAURIE MOYER, P.E.</p>	<p>6/1/2018 ADOPTED</p>	<p>THE ARCHITECT/ENGINEER ASSUMES RESPONSIBILITY FOR APPROPRIATE USE OF THIS STANDARD.</p>	<p>STANDARD NO. <b>506S-WAD-SM</b> 1 OF 2</p>



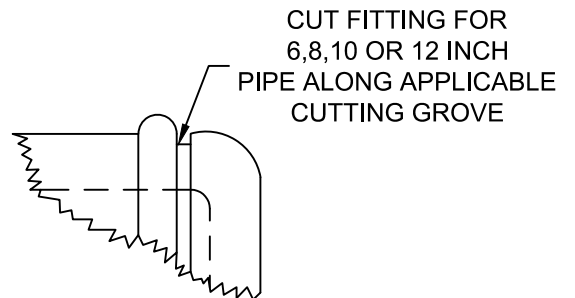
**SECTION A-A**



**DETAIL A**



**DETAIL B**



**DETAIL C**

REFERENCES  
 DETAIL 503S-2W-SM  
 DETAIL 503S-3W-SM  
 DETAIL 1100S-1-SM

<b>The City of San Marcos</b> Engineering and Capital Improvements		CURRENT AS OF 1/1/2021	<b>WASTEWATER ACCESS DEVICE (W.A.D.)</b>
RECORD COPY SIGNED BY LAURIE MOYER, P.E.	6/1/2018 ADOPTED	THE ARCHITECT/ENGINEER ASSUMES RESPONSIBILITY FOR APPROPRIATE USE OF THIS STANDARD.	STANDARD NO. <b>506S-WAD-SM</b> 2 OF 2