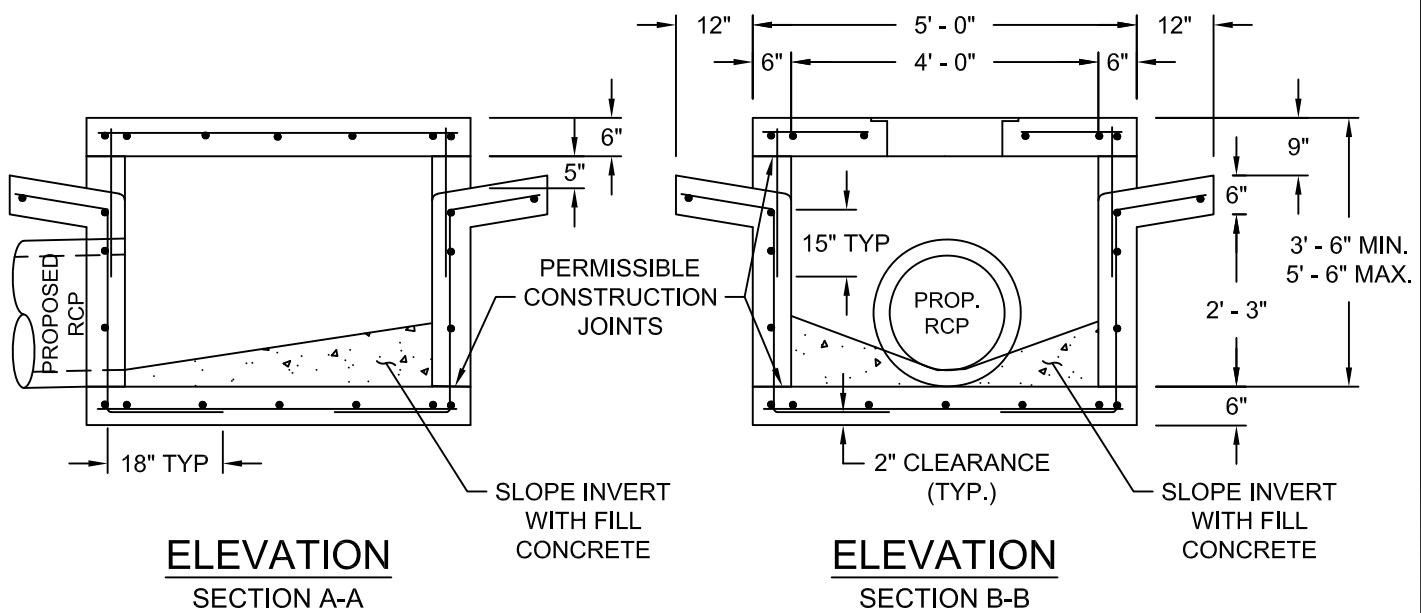


**PLAN VIEW**



**ELEVATION SECTION A-A**

**ELEVATION SECTION B-B**

**NOTES:**

1. REBAR PLACEMENT WILL BE PER MANUFACTURERS RECOMMENDATION. IF POSSIBLE TRAFFIC LOADS DESIGN MUST MEET HS-20 MINIMUM BEARING CAPACITY. CAST IN PLACE MUST BE SUBMITTED & SEALED BY DESIGN ENGINEER.
2. ALL CUT STEEL SHALL BE REPLACED WITH ADDITIONAL DIAGONAL BARS OF THE SAME DIAMETER.
3. INLET RING AND COVER SHALL BE IN ACCORDANCE WITH CITY OF SAN MARCOS STANDARD 503S-2S-SM.
4. CONCRETE COVERAGE OF STEEL SHALL BE 2" MIN. AT ALL SURFACES.
5. ALL MEASUREMENTS ARE MINIMUM UNLESS OTHERWISE NOTED.

<b>The City of San Marcos</b> Engineering and Capital Improvements		CURRENT AS OF <b>1/1/2020</b>	<b>PRECAST 4-SIDED AREA INLET</b>	
RECORD COPY SIGNED BY <hr/> <b>LAURIE MOYER, P.E.</b>		<b>6/2/2017</b> <hr/> ADOPTED	THE ARCHITECT/ENGINEER ASSUMES RESPONSIBILITY FOR APPROPRIATE USE OF THIS STANDARD.	
			STANDARD NO. <b>508S-9-SM</b>	1 OF 1