

MATERIAL LIST		
I.D.	ITEM	DESCRIPTION
*A	CORNER POST, INTERMEDIATE BRACES AND GATE POST	CORNER AND INTERMEDIATE POST WILL BE STEEL 4" O.D. AT 9.11 LBS/LF GATE POST WILL BE STEEL PIPE (O.D. VARIES SEE SHEET 2 AND 3)
B	TENSION BAND	1/4" X 3/4" STEEL BAND
C	BRACE RAIL	STEEL PIPE 1 5/8" O.D. AT 2.27 LBS/LF
D	DIAGONAL TRUSS ROD	3/8" STEEL TRUSS ROD
E	TOP RAIL	[MATERIAL?] RAIL 1 5/8" O.D. AT 2.27 LBS/LF
F	TENSION WIRE	7 GAUGE, COMPLY WITH ASTM A-824
G	LINE POST	STEEL PIPE 2 3/8" O.D. AT 3.65 LBS/LF
H	CONCRETE	5000 PSI CONCRETE AROUND THE POST. DIAMETER WILL BE A MINIMUM OF 4 TIMES THE POST O.D. DIAMETER. (ITEM "G" LINE POST 9.5" MIN. DIA.) (ITEM "A" CORNER POST AND INTERMEDIATE BRACES 16" MIN. DIA.) (ITEM "A" GATE POST DIA. VARIES SEE SHT 2 OF 3 AND SHT 3 OF 3)
I	BARBED WIRE	1 1/2 GAUGE GALVANIZED (CLASS II ASTM121)

*SEE NOTE 1

NOTE;

1. ALL ITEMS WILL BE THE SAME ON BOTH SIDES OF THE CORNER POST AND INTERMEDIATE BRACES. SEE (SHT 2 OF 3) AND (SHT 3 OF 3) FOR GATE SIDE OF GATE POST.
2. IF CORNER POST ARE MORE THEN 100 FEET APART OR 100 FEET FROM GATE POST: INTERMEDIATE BRACES WILL BE USED IN INTERVALS NO GREATER THAN 100 FEET.
3. 6 FOOT 2 INCH DIAMOND MESH INTERWOVEN FABRIC (MAXIMUM OF 100 FEET LONG), 9 GAUGE (HEAVY DUTY COMMERCIAL) WILL BE TIED TO TOP RAIL, LINE POSTS, BRACE RAIL, TENSION WIRE AND TENSION BANDS WITH ALUMINUM ALLOY STEEL TIE WIRE AT 15 INCHES ON CENTER.
4. ALL FITTINGS WILL BE GALVANIZED STEEL (SLEEVES, BANDS, CLIPS, RAIL ENDS, TENSION BARS, FASTENERS,...ECT)

SECURITY FENCE

SHT 1 OF 3

The City of San Marcos
Engineering and Capital Improvements

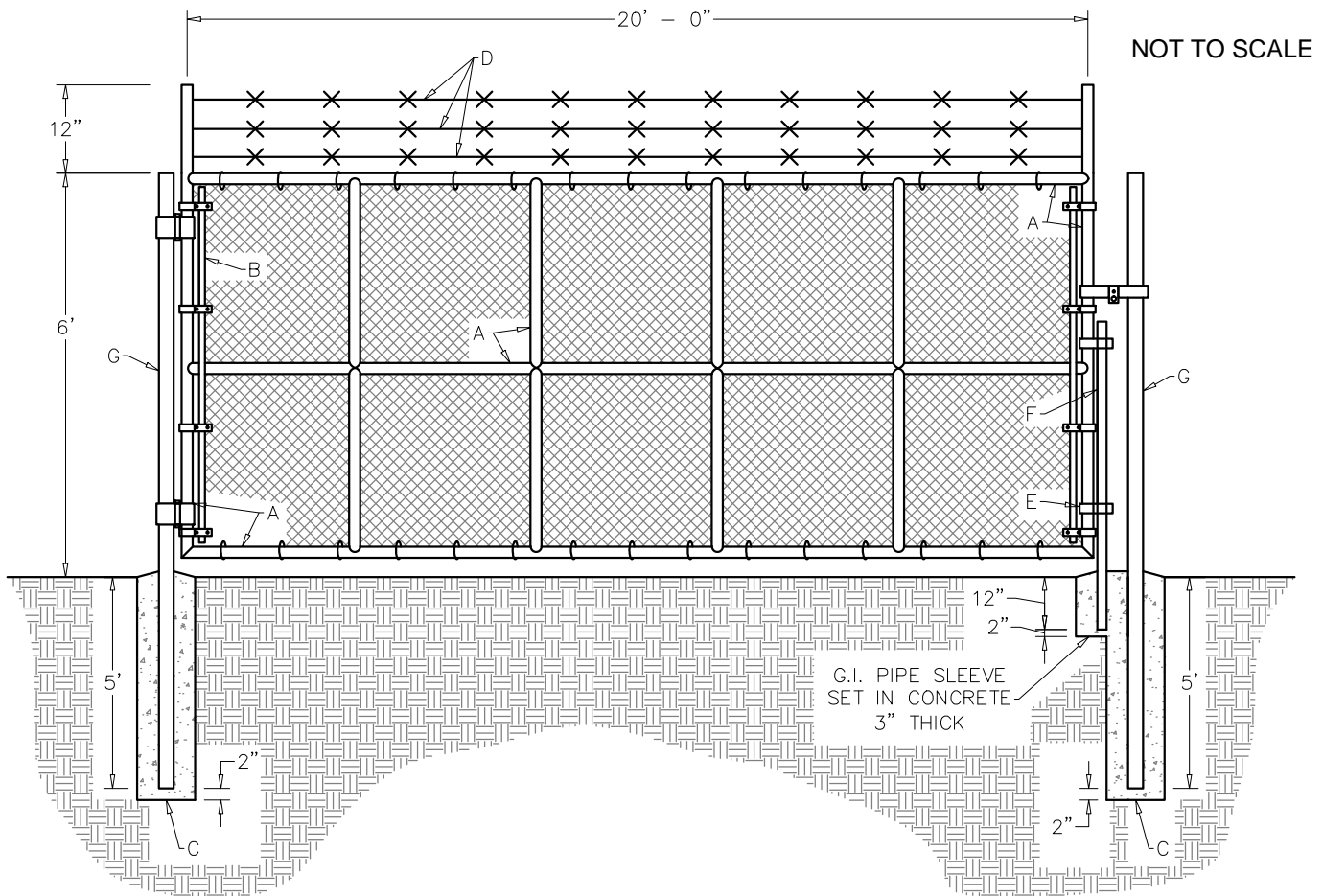
SECURITY FENCE AND GATE

RECORDED COPY SIGNED BY
LAURIE MOYER, P.E. 3-16-2015
ADOPTED

THE ARCHITECT/ENGINEER ASSUMES
RESPONSIBILITY FOR APPROPRIATE
USE OF THIS STANDARD

701S-1-SM

N.T.S. STANDARD DETAIL



MATERIAL LIST		
I.D.	ITEM	DESCRIPTION
A	GATE FRAME	GATE FRAME SHALL BE 2 3/8 INCH SCHEDULE 40 GALVANIZED STEEL PIPE WITH CENTER AND CROSS BRACING OF SAME MATERIAL AT EQUAL SPACING WITH FULLY WELDED CONSTRUCTION
B	TENSION BAND	1/4" X 3/4" STEEL BAND
C	CONCRETE	5000 PSI CONCRETE AROUND THE POST. DIAMETER WILL BE A MINIMUM OF 4 TIMES THE POST O.D. (GATE POST (MAIN ENTRANCE) 34 1/2" MIN. DIA.)
D	BARBED WIRE	1 1/2 GAGE GALVANIZED (CLASS II ASTM121)
E	PLUNGER ROD GUIDE	2 REQUIRED
F	PLUNGER ROD	1 3/8 INCH O.D.
G	GATE POST	GATE POST WILL BE STEEL PIPE 8 5/8" O.D.

NOTE;

1. 6 FOOT 2 INCH DIAMOND MESH INTERWOVEN FABRIC, 9 GAUGE (HEAVY DUTY COMMERCIAL) WILL BE TIE TO TOP, BOTTOM AND BOTH VERTICAL AND HORIZONTAL CROSS BRACES OF THE FRAME WITH ALUMINUM ALLOY STEEL TIE WIRE AT 15 INCHES ON CENTER.
2. ALL FITTINGS WILL BE GALVANIZED STEEL (SLEEVES, BANDS, CLIPS, RAIL ENDS, TENSION BARS, FASTENERS, PLUNGER ROD, SCREW RESTRAINERS...ETC)
3. GATE HARDWARE: FORK LATCH WITH GRAVITY DROP; TWO 180 DEGREE GATE HINGES PER LEAF AND HARDWARE FOR PADLOCK.

SECURITY GATE

(MAIN ENTRANCE)

SHT 2 OF 3

The City of San Marcos
Engineering and Capital Improvements

SECURITY FENCE AND GATE

RECORDED COPY SIGNED BY

3-16-2015

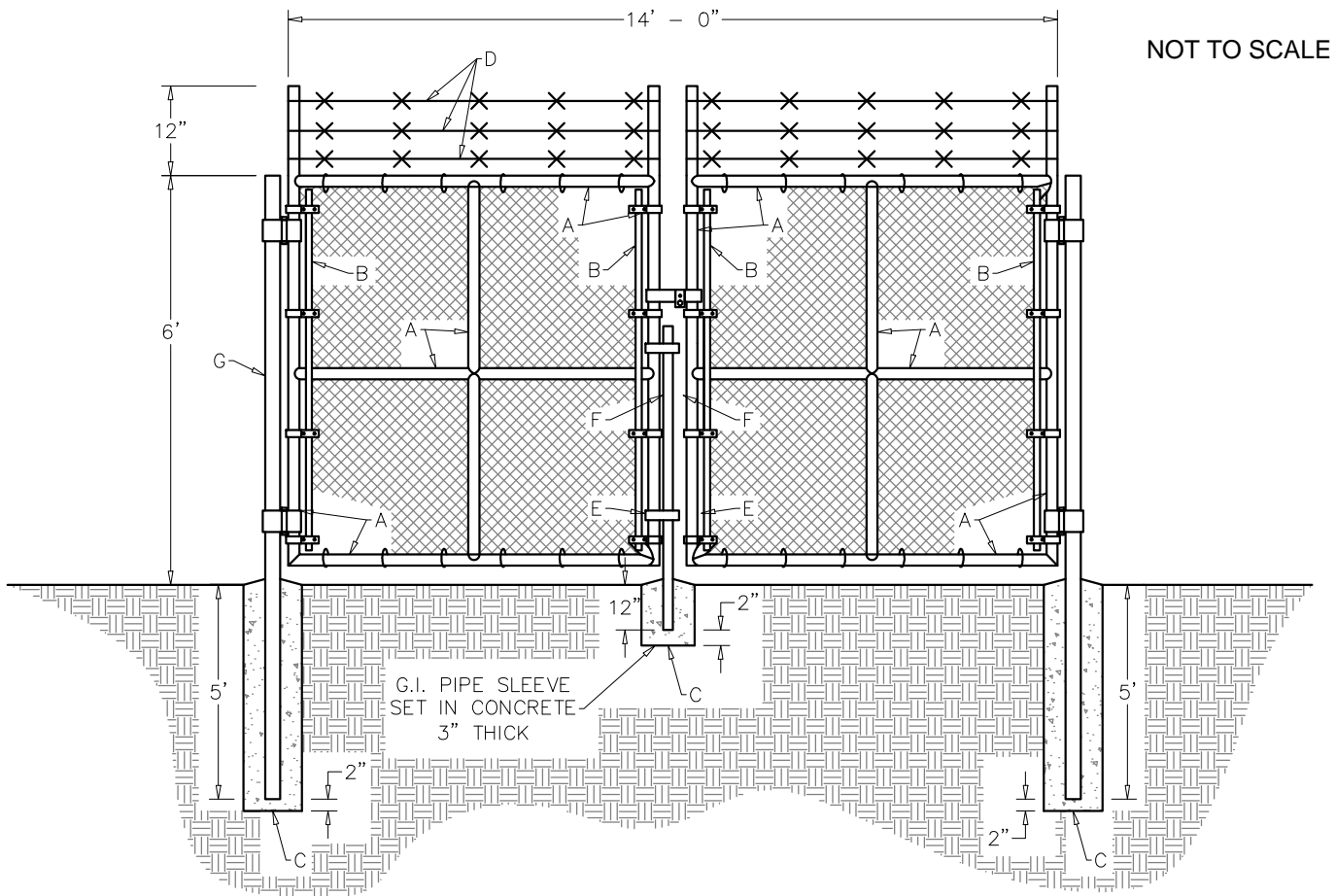
LAURIE MOYER, P.E.

ADOPTED

THE ARCHITECT/ENGINEER ASSUMES
RESPONSIBILITY FOR APPROPRIATE
USE OF THIS STANDARD

701S-1-SM

N.T.S. STANDARD DETAIL



MATERIAL LIST		
I.D.	ITEM	DESCRIPTION
A	GATE FRAME	GATE FRAME SHALL BE 1 7/8 INCH SCHEDULE 40 GALVANIZED PIPE WITH CENTER AND CROSS BRACING OF SAME MATERIAL WITH FULLY WELDED CONSTRUCTION
B	TENSION BAND	1/4" X 3/4" STEEL BAND
C	CONCRETE	5000 PSI CONCRETE AROUND THE POST. DIAMETER WILL BE A MINIMUM OF 4 TIMES THE POST O.D. (GATE POST (MAINTENANCE YARD) 24" MIN. DIA.)
D	BARBED WIRE	1 1/2 GAGE GALVANIZED (CLASS II ASTM121)
E	PLUNGER ROD GUIDE	2 REQUIRED
F	PLUNGER ROD	1 3/8 INCH O.D.
G	GATE POST	GATE POST WILL BE STEEL PIPE 6" O.D.

- NOTE;
- 6 FOOT 2 INCH DIAMOND MESH INTERWOVEN FABRIC, 9 GAUGE (HEAVY DUTY COMMERCIAL) WILL BE TIE TO TOP, BOTTOM AND BOTH VERTICAL AND HORIZONTAL CROSS BRACES OF THE FRAME WITH ALUMINUM ALLOY STEEL TIE WIRE AT 15 INCHES ON CENTER.
 - ALL FITTINGS WILL BE GALVANIZED STEEL (SLEEVES, BANDS, CLIPS, RAIL ENDS, TENSION BARS, FASTENERS, PLUNGER ROD, SCREW RESTRAINERS...ETC)
 - GATE HARDWARE: FORK LATCH WITH GRAVITY DROP; TWO 180 DEGREE GATE HINGES PER LEAF AND HARDWARE FOR PADLOCK.

SECURITY GATE

(MAINTENANCE YARD)

SHT 3 OF 3

The City of San Marcos
Engineering and Capital Improvements

SECURITY FENCE AND GATE

RECORDED COPY SIGNED BY
LAURIE MOYER, P.E. 3-16-2015
ADOPTED

THE ARCHITECT/ENGINEER ASSUMES
RESPONSIBILITY FOR APPROPRIATE
USE OF THIS STANDARD

701S-1-SM

N.T.S. STANDARD DETAIL