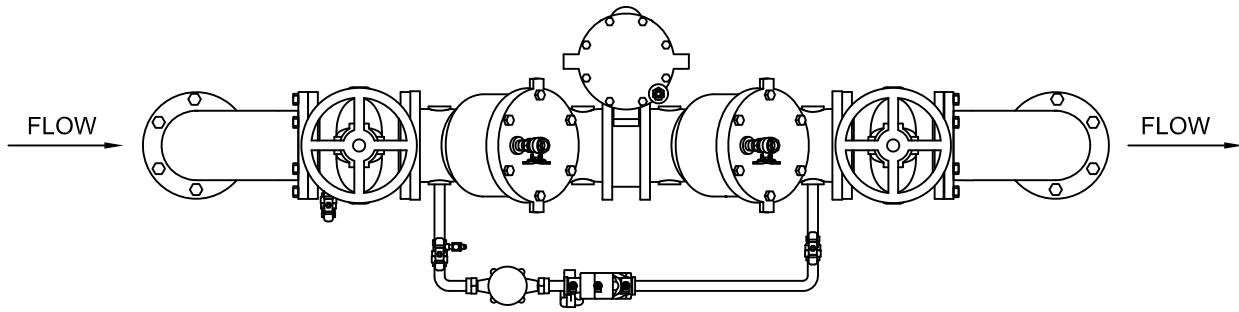


PROPERTY LINE OR EASEMENT

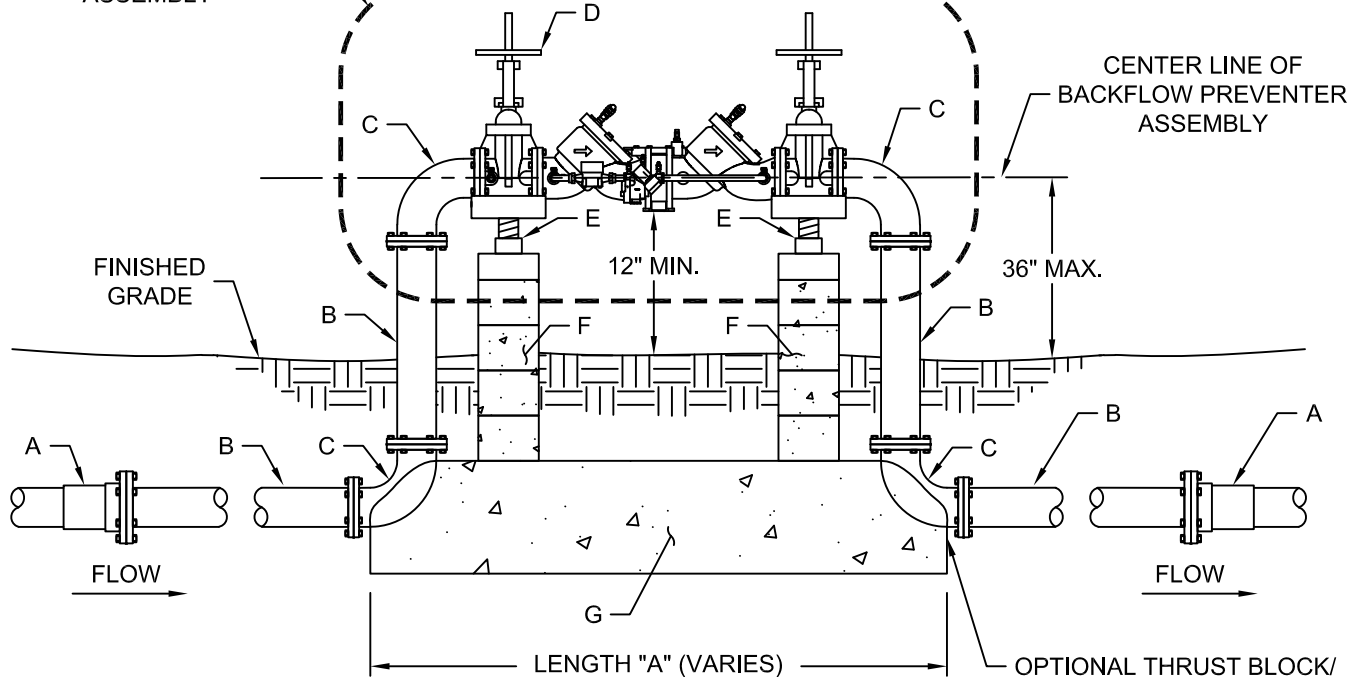
CUSTOMER SIDE



**PLAN VIEW**  
(ABOVE GROUND)

PROPERTY LINE OR EASEMENT

APPROVED REDUCED PRESSURE PRINCIPLE BACKFLOW PREVENTER ASSEMBLY



**PROFILE VIEW**  
(ABOVE GROUND)

**REDUCED PRESSURE PRINCIPLE DETECTOR ASSEMBLY IS NOT ALLOWED BELOW GROUND.**

The City of San Marcos  
Engineering and Capital Improvements

REDUCED PRESSURE PRINCIPLE DETECTOR  
ASSEMBLY 3"-10"

RECORD COPY SIGNED BY 6/2/2017

THE ARCHITECT/ENGINEER ASSUMES  
RESPONSIBILITY FOR APPROPRIATE USE  
OF THIS STANDARD.

STANDARD NO.

Laurie Moyer, P.E. ADOPTED

**520S-19G-SM**

1 OF 2

## RECOMMENDED MATERIALS LIST

LABEL	ITEM	SIZE				
	BACKFLOW PREVENTER SIZE	3"	4"	6"	8"	10"
A	FLANGED ADAPTER (WHEN REQUIRED)	3"	4"	6"	8"	10"
B	PIPE SPOOL FLANGED D.I.P.	3"	4"	6"	8"	10"
C	90° ELBOW FLANGED D.I.P.	3"	4"	6"	8"	10"
D	RESILIENT SEATED GATE VALVE. RISING STEM VALVE FOR FIRE LINE CONNECTION AND NON-RISING STEM VALVE FOR NON FIRE LINE CONNECTION.	3"	4"	6"	8"	10"
<b>OPTIONAL ITEMS</b>						
E	ADJUSTABLE METAL PIPE SUPPORT WITH 1" ADJUSTING ROD	OPTIONAL				
F	8"X8"X8" CONCRETE BLOCKS WITH MORTAR (TOTAL NUMBER OF BLOCKS VARIES ON HEIGHT)	OPTIONAL				
G	16"X16"X"A" CONCRETE THRUST BLOCK/FOUNDATION (DIMENSION "A" VARIES ON SIZE OF ASSEMBLY)	OPTIONAL				

**NOTES:**

1. REDUCED PRESSURE PRINCIPLE BACKFLOW PREVENTION ASSEMBLY IS NOT ALLOWED BELOW GROUND.
2. OPTIONAL ITEMS MAY BE REQUIRED TO SUPPORT WEIGHT OF BACKFLOW PREVENTER.
3. BACKFLOW PREVENTER MUST BE PROTECTED FROM WEATHER.
4. BACKFLOW PREVENTER SHOULD BE AS CLOSE AS POSSIBLE TO SERVICE CONNECTION ON PROPERTY OWNER SIDE OF EASEMENT OR PROPERTY LINE.
5. DUCTILE IRON PIPING IS RECOMMEND FROM METER VAULT TO BACKFLOW PREVENTER.
6. FIRE LINES REQUIRE A DETECTOR ASSEMBLY ON THE BACKFLOW DEVICE.
7. A UNMETERED FIRE LINE WILL USE DETAIL 520S-WMT-SM WITH TAP SIZE EQUAL TO BACKFLOW PREVENTER SIZE TO CONNECT TO CITY WATER LINE.

<b>The City of San Marcos</b> Engineering and Capital Improvements		<b>REDUCED PRESSURE PRINCIPLE DETECTOR ASSEMBLY 3"-10"</b>	
RECORD COPY SIGNED BY _____ LAURIE MOYER, P.E.	6/2/2017 _____ ADOPTED	THE ARCHITECT/ENGINEER ASSUMES RESPONSIBILITY FOR APPROPRIATE USE OF THIS STANDARD.	STANDARD NO. <b>520S-19G-SM</b> 2 OF 2