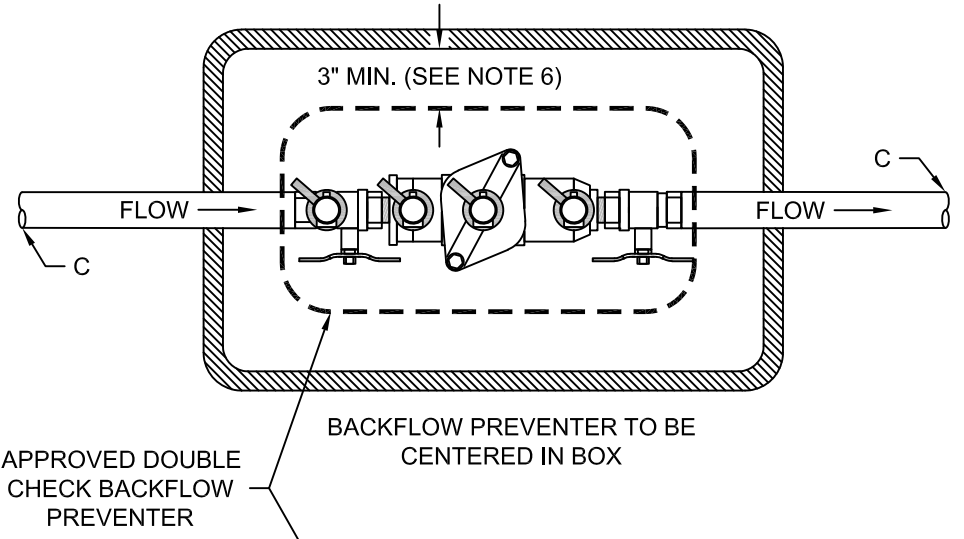
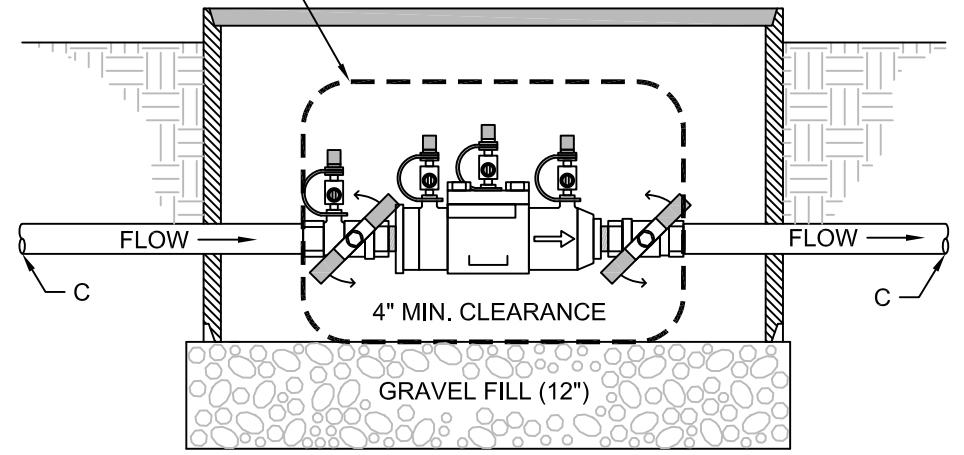


PROPERTY LINE  
OR EASEMENT

**PLAN VIEW**  
BELOW GROUND

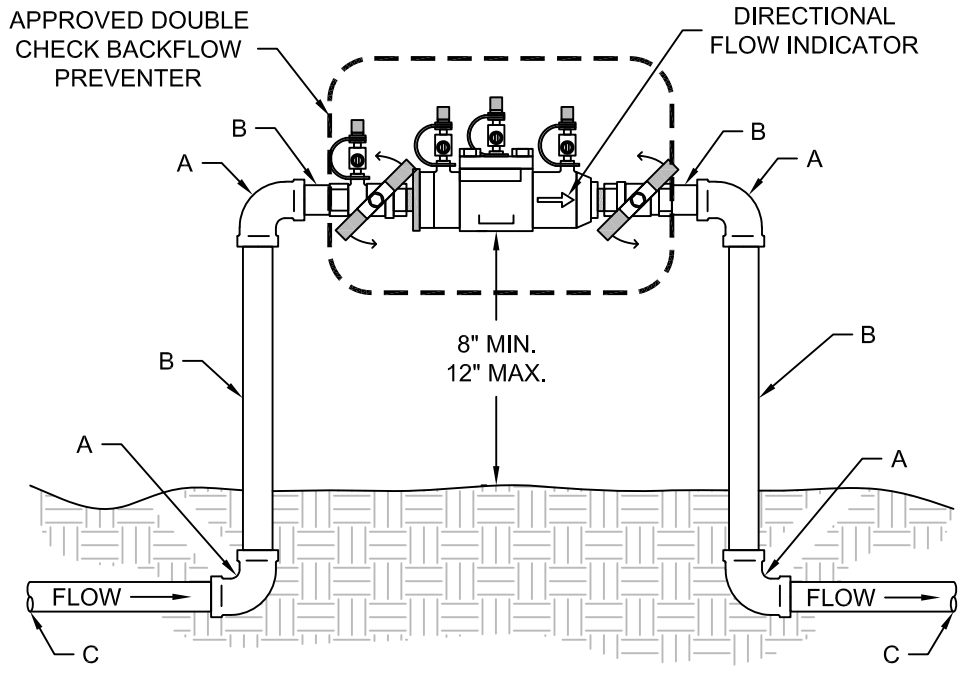


**PROFILE VIEW**  
BELOW GROUND



FROM METER OR  
SERVICE TIE-IN SEE  
DETAIL 520S-WMT-SM  
FOR SERVICE TIE-IN

**PROFILE VIEW**  
ABOVE GROUND



<p>The City of San Marcos Engineering and Capital Improvements</p>	<p>CURRENT AS OF 1/1/2020</p>	<p><b>DOUBLE CHECK VALVE BACKFLOW PREVENTION ASSEMBLY 3/4"-2"</b></p>	
<p>RECORD COPY SIGNED BY LAURIE MOYER, P.E.</p>	<p>1/1/2020 ADOPTED</p>	<p>THE ARCHITECT/ENGINEER ASSUMES RESPONSIBILITY FOR APPROPRIATE USE OF THIS STANDARD.</p>	<p>STANDARD NO. <b>520S-19D-SM</b> 1 OF 2</p>

**RECOMMENDED MATERIALS LIST**

LABEL	ITEM	SIZE			
		3/4"	1"	1 1/2"	2"
	BACKFLOW PREVENTER SIZE	3/4"	1"	1 1/2"	2"
A	BRASS ELBOW 90° BEND	3/4"	1"	1 1/2"	2"
B	BRASS NIPPLE THREADED BY THREADED	3/4"	1"	1 1/2"	2"
C	BRASS NIPPLE THREADED	3/4"	1"	1 1/2"	2"

NOTES:

- 1. FIRE LINES REQUIRE A DETECTOR ASSEMBLY ON THE BACKFLOW DEVICE.**
2. BACKFLOW PREVENTER MUST BE PROTECTED FROM WEATHER.
3. BACKFLOW PREVENTER SHOULD BE AS CLOSE AS POSSIBLE TO SERVICE CONNECTION ON PROPERTY OWNER SIDE OF EASEMENT OR PROPERTY LINE.
4. A TRANSITION FROM PVC TO BRASS WITH A COUPLING MAY BE RECOMMENDED AFTER METER VAULT BEFORE THE BACKFLOW PREVENTER.
5. A UNMETERED FIRE LINE WILL USE DETAIL 520S-WMT-SM WITH TAP SIZE EQUAL TO BACKFLOW PREVENTER SIZE TO CONNECT TO CITY WATER LINE.
6. 3" MIN. CLEARANCE FROM ALL WALLS OF METER.

REFERENCES  
 DETAIL 520S-WMT-SM

<b>The City of San Marcos</b> Engineering and Capital Improvements	CURRENT AS OF 1/1/2020	<b>DOUBLE CHECK VALVE BACKFLOW PREVENTION ASSEMBLY 3/4"-2"</b>	
RECORD COPY SIGNED BY  LAURIE MOYER, P.E.	1/1/2020  ADOPTED	THE ARCHITECT/ENGINEER ASSUMES RESPONSIBILITY FOR APPROPRIATE USE OF THIS STANDARD.	STANDARD NO. <b>520S-19D-SM</b> 2 OF 2