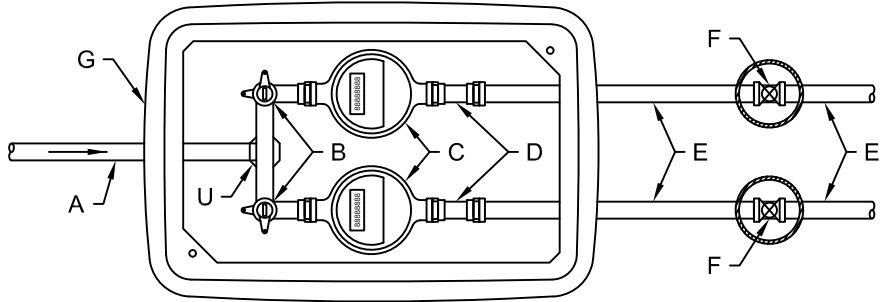
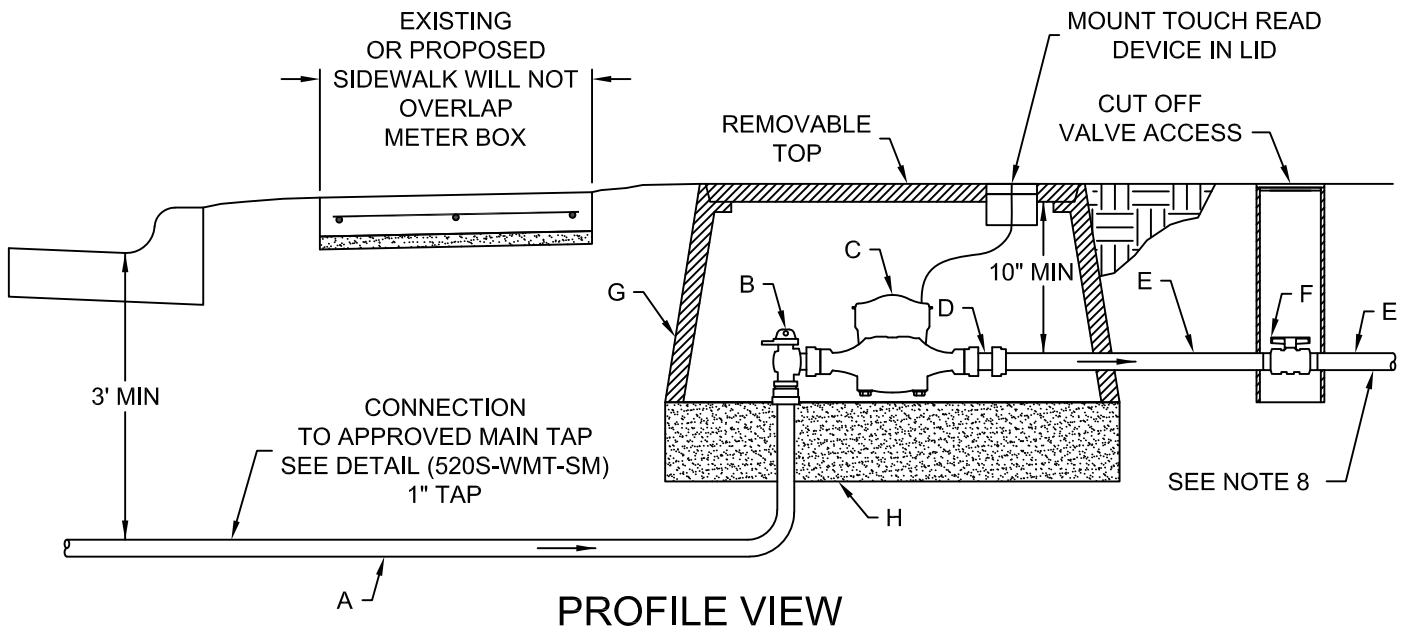


**DETAIL ITEM U**  
"U" BRANCH CONNECTION

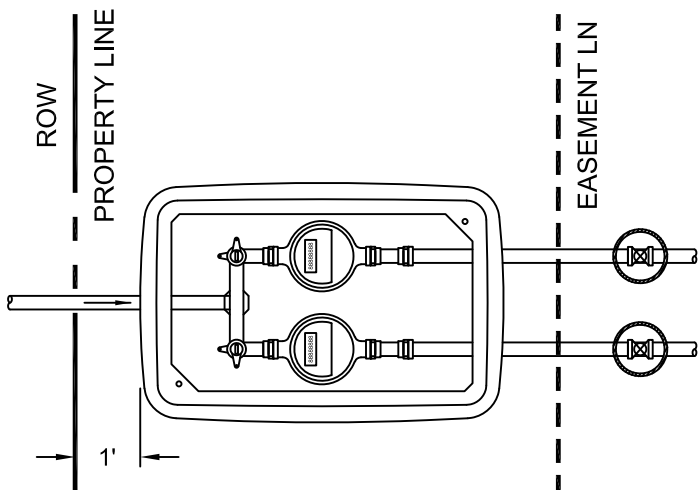


**PLAN VIEW**

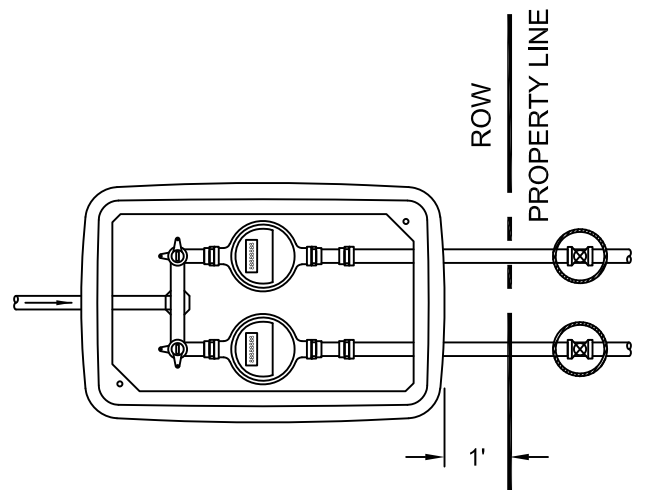


**PROFILE VIEW**

**METER  
INSIDE EASEMENT**



**METER  
INSIDE ROW / PROPERTY LINE**



**The City of San Marcos**  
Engineering and Capital Improvements

**5/8", & 3/4" DUAL METER SERVICE  
CONNECTIONS (IRRIGATION OR DOMESTIC)**

RECORD COPY SIGNED BY 6/2/2017  
LAURIE MOYER, P.E. ADOPTED

THE ARCHITECT/ENGINEER ASSUMES  
RESPONSIBILITY FOR APPROPRIATE USE  
OF THIS STANDARD.

STANDARD NO.  
**520S-9-SM**  
1 OF 2

MATERIALS			
LABEL	ITEMS	METER SIZE	
		5/8"	3/4"
A	TYPE K COPPER TUBING PER STANDARD PRODUCT LIST NO. WW-613	1"	1"
B	APPROVED ANGLE METER STOP WITH PADLOCK WING. (FORD TYPE Q COMPRESSION FITTING OR APPROVED EQUIVALENT.) PER STANDARD PRODUCT LIST NO. WW-68	5/8"	3/4"
C	WATER METER PER STANDARD PRODUCT LIST NO. WW-144	5/8"	3/4"
D	WATER METER COUPLING - CONNECTION SWIVEL NUT	5/8"	3/4"
E	CUSTOMER YARD PIPE - AS SPECIFIED	REQUIRED	
F	CUSTOMER CUT - OFF VALVE IN VALVE BOX AND LID	REQUIRED	
G	METER BOX AND LID PER STANDARD PRODUCT LIST NO. WW-145A HDPE METER BOXES	REQUIRED	
H	6" COMPACTED SAND	REQUIRED	
U	"U" BRANCH CONNECTION (COMPRESSION - TYPE FITTING) PER STANDARD PRODUCT LIST NO. WW-68	1" x 3/4"	1" x 3/4"

NOTES:

1. TOP OF METER BOX SHALL BE 1" ABOVE GRADE AFTER REVEGETATION OR FLUSH WITH PAVEMENT SURFACE. METER BOX WILL BE LOCATED BEHIND BACK CURB, OUT OF SIDEWALK OR TRAFFIC LOADED AREA.
2. FOR PIPES AND FITTINGS OUTSIDE THE METER BOX SHALL BE EMBEDDED AND BACKFILLED PER DETAIL 510S-S&L-SM WITHIN THE ROW OR EASEMENT.
3. WATER METER WILL BE HORIZONTALLY CENTERED WITH THE METER BOX.
4. TAP TO CITY WATER LINE WILL BE PER CITY DETAIL 510S-WMT-SM WITH A 1" TAP TO THE MAIN.
5. CUT-OFF VALVE AND CONNECTION TO YARD PIPING TO BE SUBMITTED FOR APPROVAL.
6. METERS TO BE SUPPLIED BY CONTRACTOR FOR COMMERCIAL ACCOUNTS.
7. ALL PARTS WILL BE PER THE CURRENT CITY OF SAN MARCOS STANDARD PRODUCTS LIST.
8. SERVICE LINE TO APPROVED BACKFLOW PREVENTER FOR NONE SINGLE FAMILY RESIDENTIAL LOTS WHEN REQUIRED.

REFERENCES

DETAIL 510S-S&L-SM  
 DETAIL 520S-WMT-SM

<b>The City of San Marcos</b> Engineering and Capital Improvements		<b>5/8", &amp; 3/4" DUAL METER SERVICE CONNECTIONS (IRRIGATION OR DOMESTIC)</b>	
RECORD COPY SIGNED BY _____ LAURIE MOYER, P.E.	6/2/2017 _____ ADOPTED	THE ARCHITECT/ENGINEER ASSUMES RESPONSIBILITY FOR APPROPRIATE USE OF THIS STANDARD.	STANDARD NO. <b>520S-9-SM</b> 2 OF 2