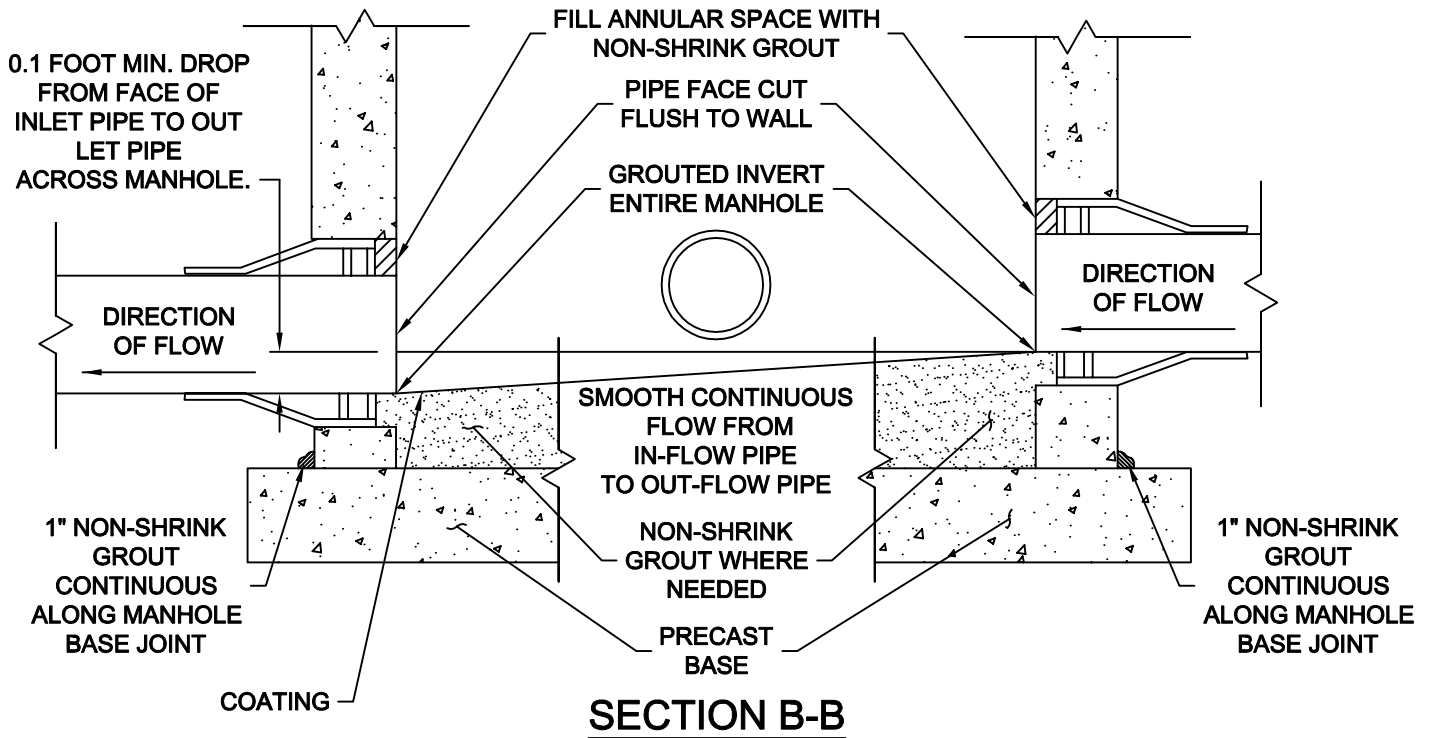


NOTES:

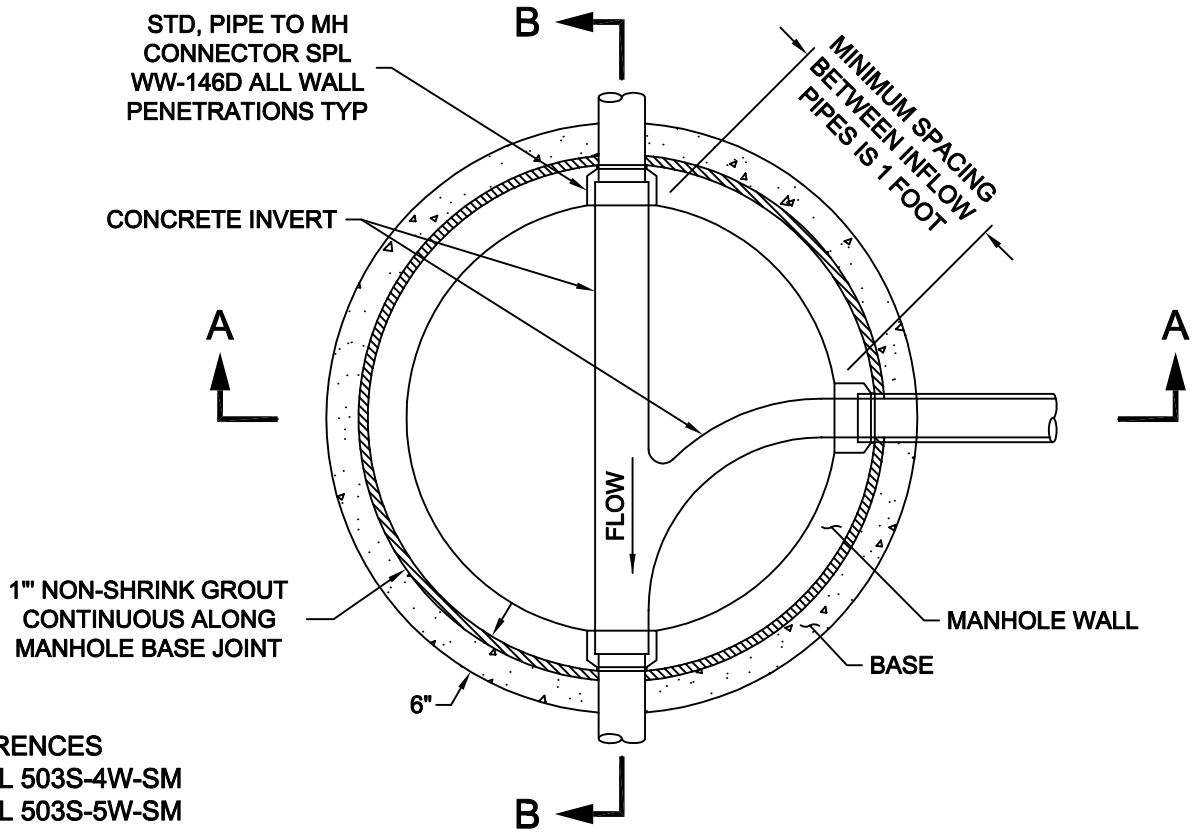
1. SEE PLANS FOR MANHOLE LOCATION, CONFIGURATION, PIPE SIZES AND TYPES.
2. SEE SPECIFICATIONS ON MATERIALS AND CONSTRUCTION.
3. MONOLITHIC MANHOLE TO BE CAST-IN-PLACE SHALL CONFORM TO ASTM SPECIFICATION C478 FOR MATERIALS AND DESIGN. MANUFACTURER TO PROVIDE DETAILS.
4. MANHOLES FOR MAINS 24" AND LARGER SHALL HAVE ECCENTRIC RISER SECTIONS.
5. DEPTH OF U CHANNEL WILL BE 3/4 THE DIAMETER OF PIPES 24" OR LESS AND WILL BE THE DIAMETER OF PIPES GREATER THEN 24".
6. MANHOLE COATING LIMITS - COAT ALL OF THE MANHOLE WALLS.
 AT TOP OF MANHOLE: SEE DETAIL 506S-4A-SM FOR END LOCATION AT GRADE RINGS.
 AT BOTTOM OF MANHOLE:
NEW MANHOLES - COAT PER SPL 511; INCLUDING THE BOTTOM AND INVERT.
MANHOLE REHABILITATION - COAT PER SPL 511A; EXCLUDING THE BOTTOM AND INVERT.

The City of San Marcos Engineering and Capital Improvements		WASTEWATER MANHOLE ON PRECAST BASE	
RECORD COPY SIGNED BY LAURIE MOYER, P.E.	6/1/2018 ADOPTED	THE ARCHITECT/ENGINEER ASSUMES RESPONSIBILITY FOR APPROPRIATE USE OF THIS STANDARD.	STANDARD NO. 506S-10-SM 1 OF 2

INVERT DETAIL



INVERT PLAN VIEW



REFERENCES
 DETAIL 503S-4W-SM
 DETAIL 503S-5W-SM
 DETAIL 506S-4A-SM

The City of San Marcos
 Engineering and Capital Improvements

WASTEWATER MANHOLE ON PRECAST BASE

RECORD COPY SIGNED BY 6/1/2018
LAURIE MOYER, P.E. ADOPTED

THE ARCHITECT/ENGINEER ASSUMES
 RESPONSIBILITY FOR APPROPRIATE USE
 OF THIS STANDARD.

STANDARD NO.
506S-10-SM
 2 OF 2