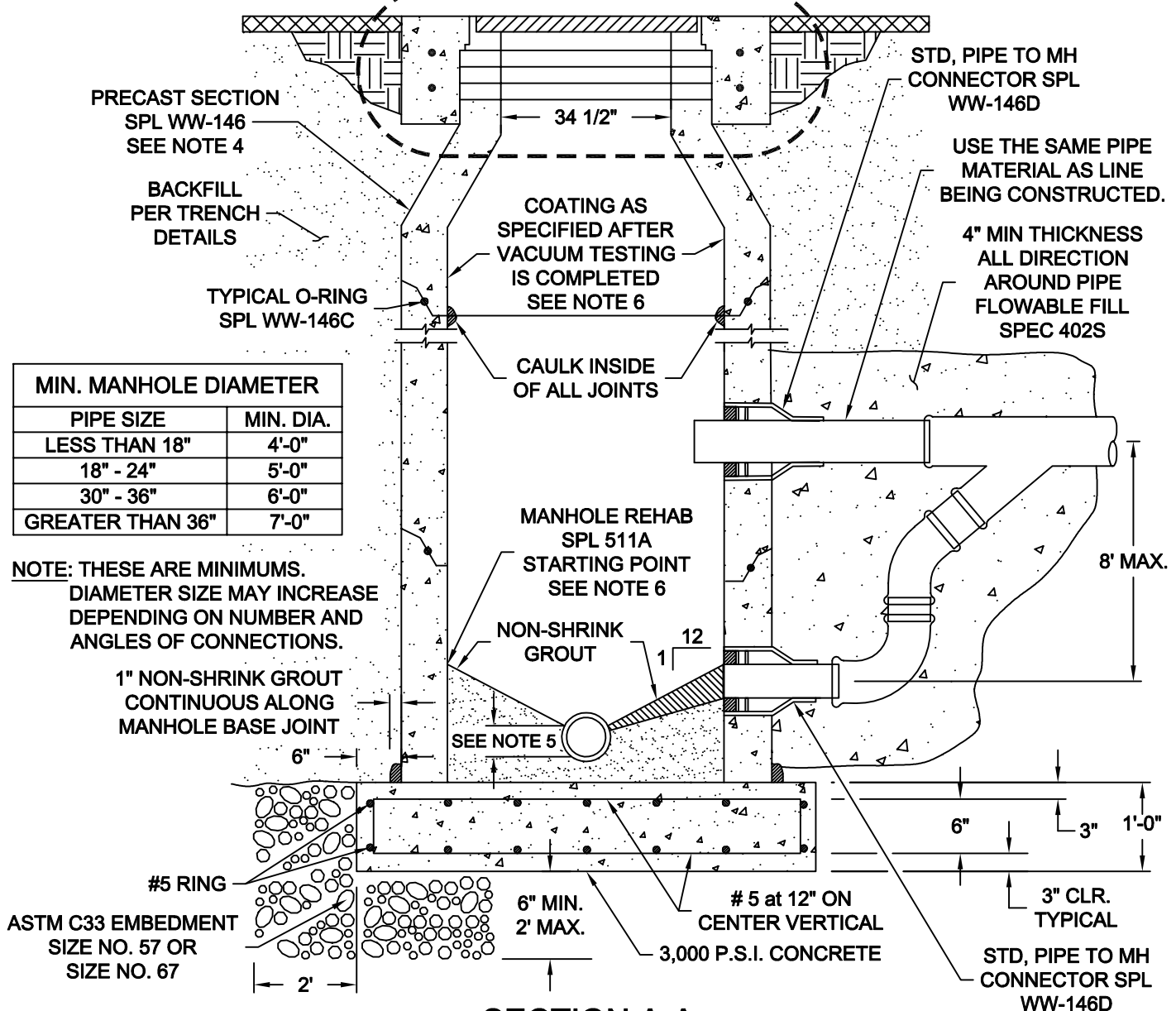


SEE DETAIL 506S-4A-SM FOR
GRADE RINGS, CONCRETE COLLAR,
AND RING & COVERS



MIN. MANHOLE DIAMETER	
PIPE SIZE	MIN. DIA.
LESS THAN 18"	4'-0"
18" - 24"	5'-0"
30" - 36"	6'-0"
GREATER THAN 36"	7'-0"

NOTE: THESE ARE MINIMUMS.
DIAMETER SIZE MAY INCREASE
DEPENDING ON NUMBER AND
ANGLES OF CONNECTIONS.

1" NON-SHRINK GROUT
CONTINUOUS ALONG
MANHOLE BASE JOINT

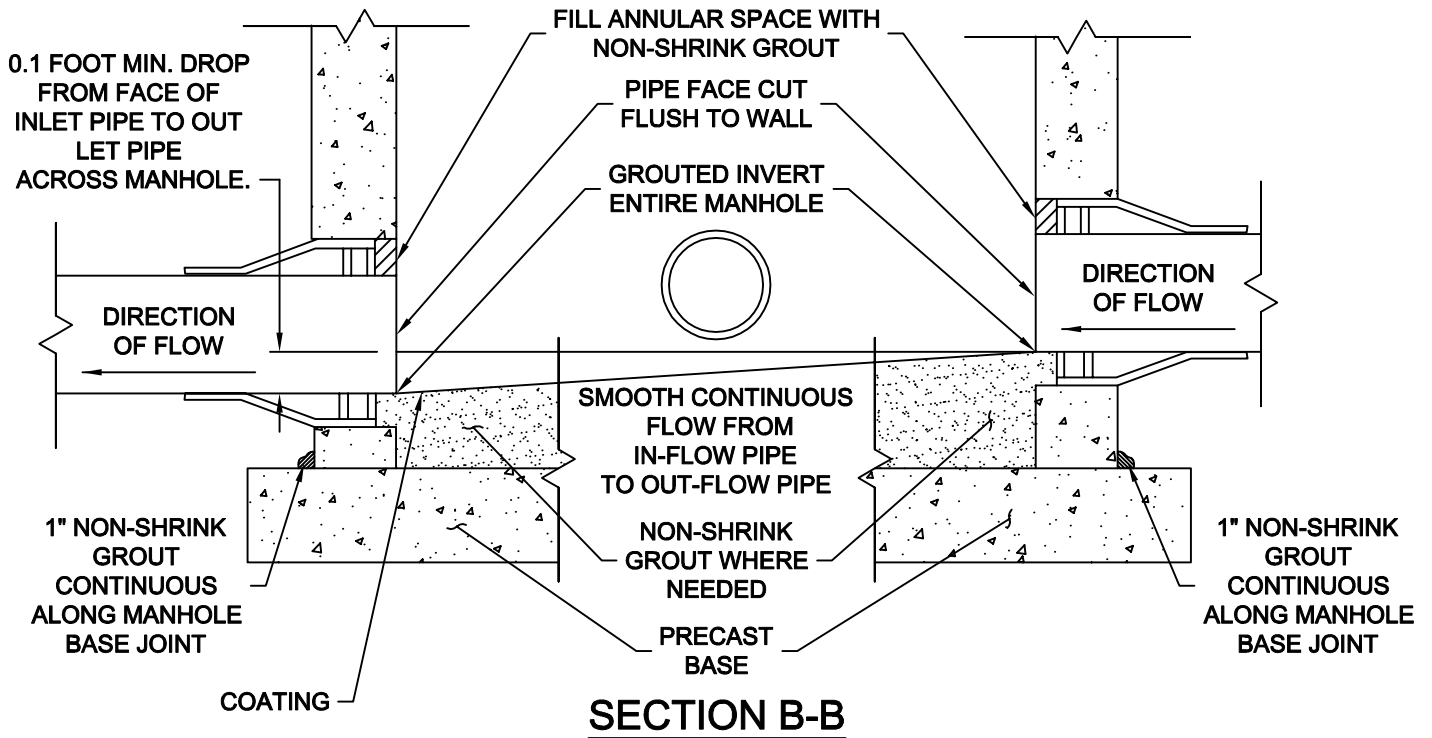
SECTION A-A

NOTES:

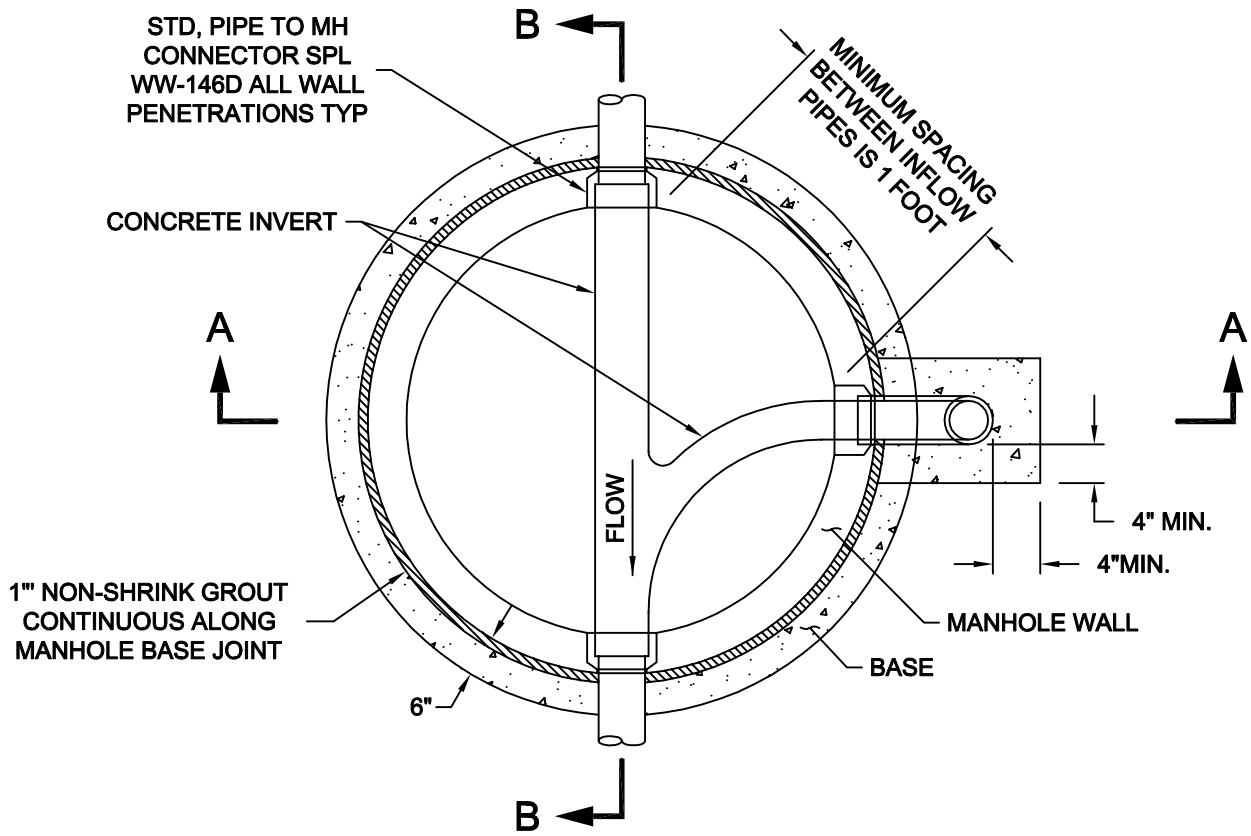
1. SEE PLANS FOR MANHOLE LOCATION, CONFIGURATION, PIPE SIZES AND TYPES.
2. SEE SPECIFICATIONS ON MATERIALS AND CONSTRUCTION.
3. MONOLITHIC MANHOLE TO BE CAST-IN-PLACE SHALL CONFORM TO ASTM SPECIFICATION C478 FOR MATERIALS AND DESIGN. MANUFACTURER TO PROVIDE DETAILS.
4. MANHOLES FOR MAINS 24" AND LARGER SHALL HAVE ECCENTRIC RISER SECTIONS.
5. DEPTH OF U CHANNEL WILL BE 3/4 THE DIAMETER OF PIPES 24" OR LESS AND WILL BE THE DIAMETER OF PIPES GREATER THEN 24"
6. MANHOLE COATING LIMITS - COAT ALL OF THE MANHOLE WALLS
AT TOP OF MANHOLE: SEE DETAIL 506S-4A-SM FOR END LOCATION AT GRADE RINGS
AT BOTTOM OF MANHOLE:
NEW MANHOLES - COAT PER SPL 511; INCLUDING THE BOTTOM AND INVERT
MANHOLE REHABILITATION - COAT PER SPL 511A; EXCLUDING THE BOTTOM AND INVERT

The City of San Marcos Engineering and Capital Improvements		PRECAST MANHOLE WITH DROP INLET ON PRECAST BASE	
RECORD COPY SIGNED BY Laurie Moyer, P.E.	6/1/2018 ADOPTED	THE ARCHITECT/ENGINEER ASSUMES RESPONSIBILITY FOR APPROPRIATE USE OF THIS STANDARD.	STANDARD NO. 506S-8-SM 1 OF 3

INVERT DETAIL



INVERT PLAN VIEW



The City of San Marcos
Engineering and Capital Improvements

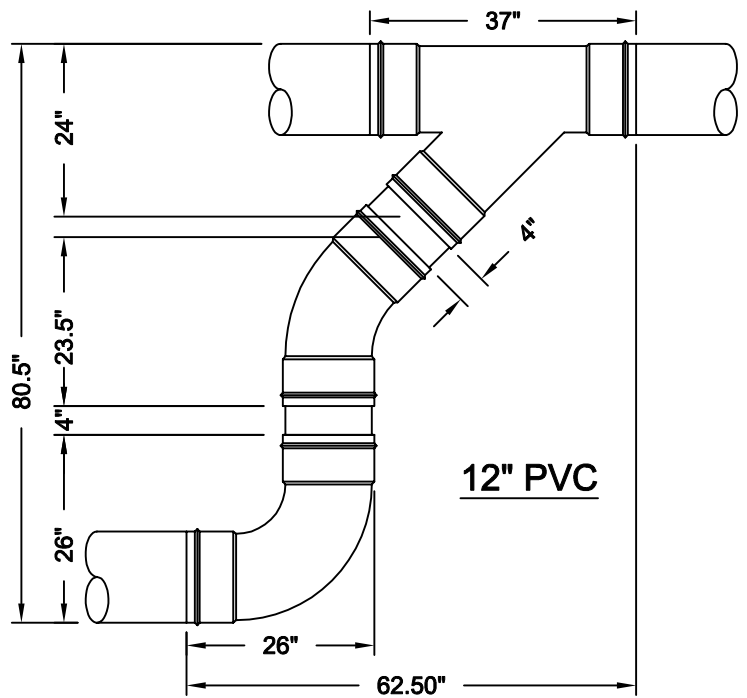
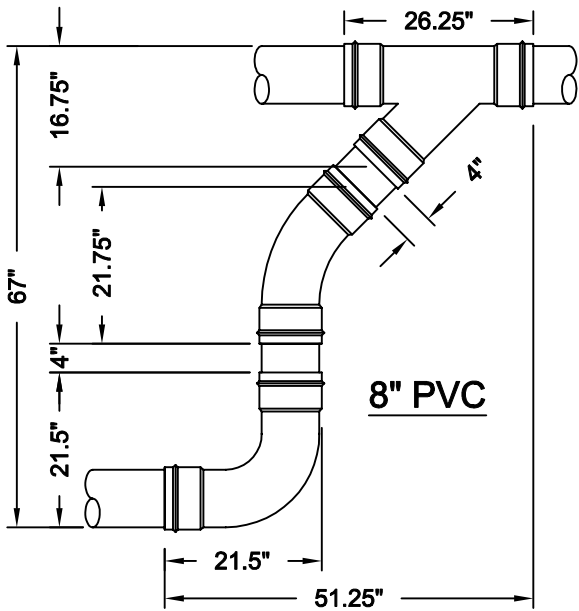
PRECAST MANHOLE WITH DROP INLET ON PRECAST BASE

RECORD COPY SIGNED BY 6/1/2018
LAURIE MOYER, P.E. ADOPTED

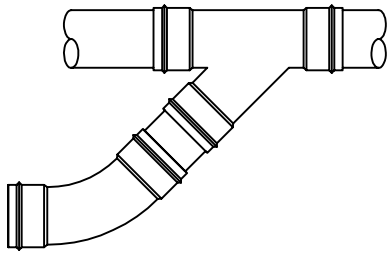
THE ARCHITECT/ENGINEER ASSUMES RESPONSIBILITY FOR APPROPRIATE USE OF THIS STANDARD.

STANDARD NO.
506S-8-SM
2 OF 3

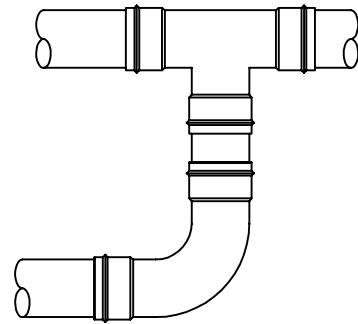
**STANDARD DROP CONNECTIONS
MINIMUM DIMENSIONS
(FOR INFORMATION ONLY)**



ALTERNATIVE OPTIONS



WYE CONNECTION



TEE CONNECTION

REFERENCES
 DETAIL 503S-4W-SM
 DETAIL 503S-5W-SM
 DETAIL 506S-4A-SM

<p align="center">The City of San Marcos Engineering and Capital Improvements</p>		<p align="center">PRECAST MANHOLE WITH DROP INLET ON PRECAST BASE</p>	
<p>RECORD COPY SIGNED BY</p> <hr/> <p>Laurie Moyer, P.E.</p>	<p>6/1/2018</p> <hr/> <p>ADOPTED</p>	<p>THE ARCHITECT/ENGINEER ASSUMES RESPONSIBILITY FOR APPROPRIATE USE OF THIS STANDARD.</p>	<p>STANDARD NO. 506S-8-SM 3 OF 3</p>