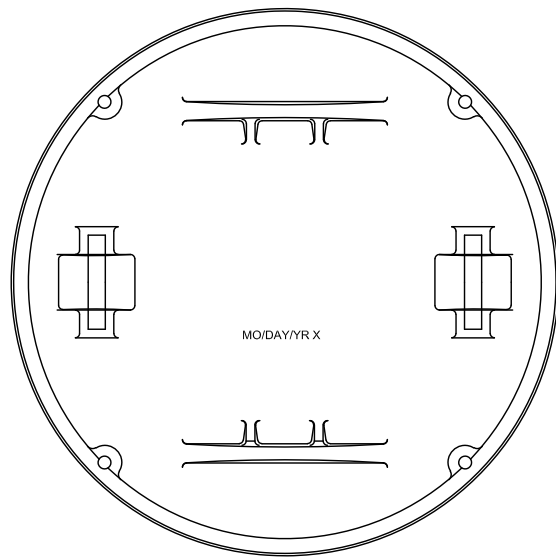
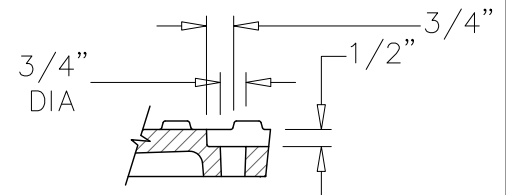


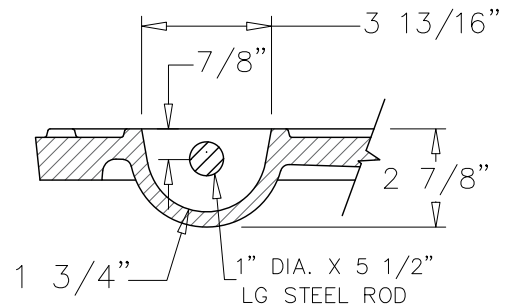
LID AND FRAME PLAN VIEW



LID BOTTOM VIEW



BOLT HOLE SECTION



PICKBAR DETAIL

SHT 1 OF 2

The City of San Marcos
Engineering and Capital Improvements

CURRENT AS OF
1/1/2020

SANITARY SEWER MANHOLE RING AND COVER 32" -BOLTED

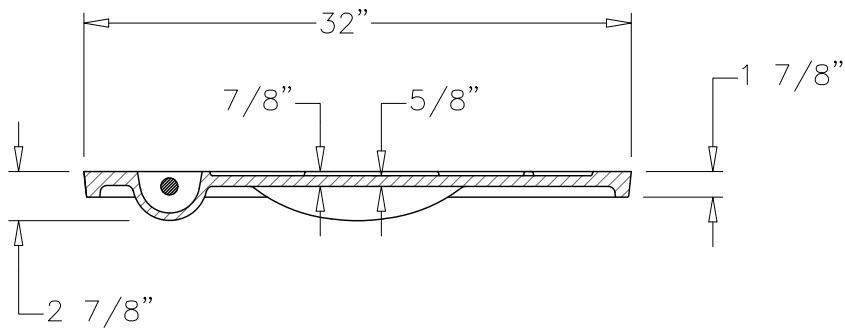
RECORDED COPY SIGNED BY
LAURIE MOYER, P.E.

3-16-2015
ADOPTED

THE ARCHITECT/ENGINEER ASSUMES
RESPONSIBILITY FOR APPROPRIATE
USE OF THIS STANDARD

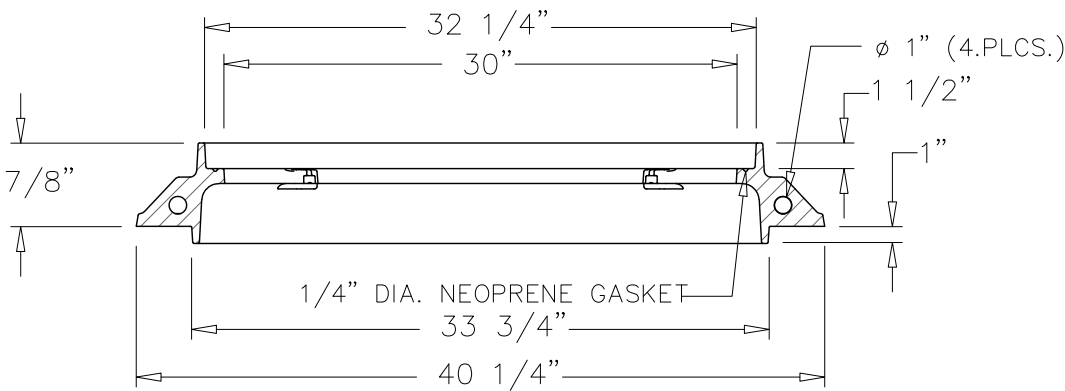
503S-5W-SM

N.T.S. STANDARD DETAIL



LID CROSS SECTION

SECTION A-A



FRAME CROSS SECTION

SECTION A-A

MATERIALS	
LID	GRAY IRON
FRAME	GRAY IRON

NOTE:

1. THIS DETAIL IS FOR USE IN PUBLIC INFRASTRUCTURE ONLY. PRIVATE INFRASTRUCTURE WILL NOT HAVE CITY OF SAN MARCOS LOGO.
2. COVER SHALL BE EAST JORDAN IRON WORKS OR APPROVED EQUIVALENT.

SHT 2 OF 2

<p>The City of San Marcos Engineering and Capital Improvements</p>	<p>CURRENT AS OF 1/1/2020</p>	<p>SANITARY SEWER MANHOLE RING AND COVER 32" -BOLTED</p>
<p>RECORDED COPY SIGNED BY LAURIE MOYER, P.E.</p>	<p>3-16-2015 ADOPTED</p>	<p>THE ARCHITECT/ENGINEER ASSUMES RESPONSIBILITY FOR APPROPRIATE USE OF THIS STANDARD</p>
		<p>503S-5W-SM N.T.S. STANDARD DETAIL</p>