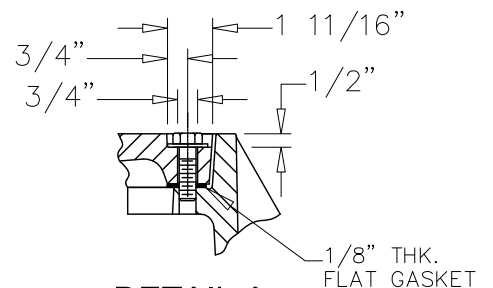
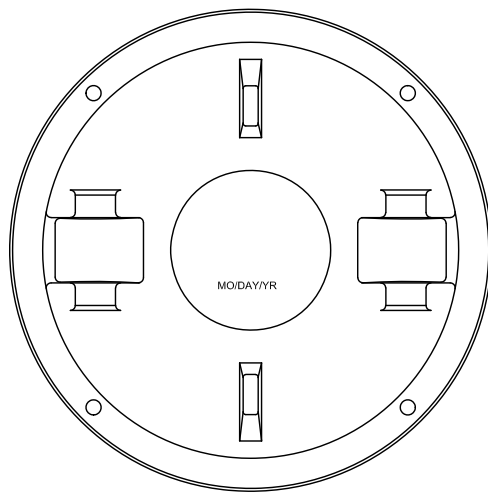


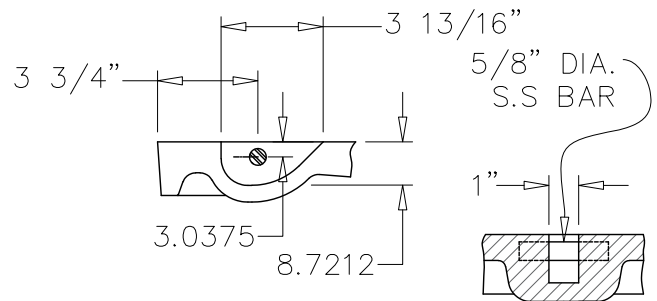
**LID AND FRAME PLAN  
VIEW**



**DETAIL A  
(BOLT DETAIL)**



**LID VIEW BOTTOM**



**PICKBAR DETAIL**

SHT 1 OF 2

The City of San Marcos  
Engineering and Capital Improvements

CURRENT AS OF  
1/1/2020

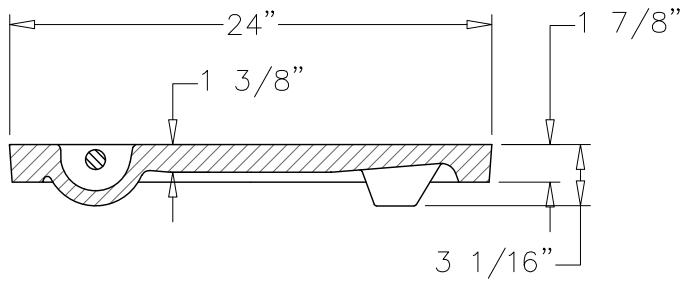
**SANITARY SEWER RING AND COVER  
(WAD) 24"- BOLTED**

RECORD COPY SIGNED BY  
LAURIE MOYER, P.E.

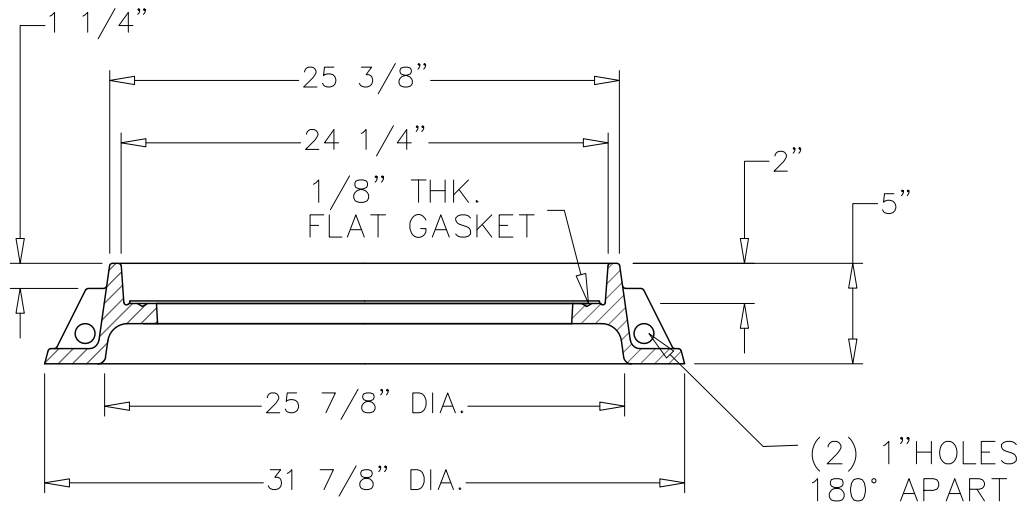
6/5/2014  
ADOPTED

THE ARCHITECT/ENGINEER ASSUMES  
RESPONSIBILITY FOR APPROPRIATE  
USE OF THIS STANDARD

**503S-3W-SM**  
N.T.S. STANDARD DETAIL



**LID SECTION VIEW**  
**SECTION A-A**



**FRAME SECTION VIEW**  
**SECTION A-A**

MATERIALS	
LID	GRAY IRON
FRAME	GRAY IRON

NOTE:

1. THIS DETAIL IS FOR USE IN PUBLIC INFRASTRUCTURE ONLY. PRIVATE INFRASTRUCTURE WILL NOT HAVE CITY OF SAN MARCOS LOGO.
2. COVER SHALL BE EAST JORDAN IRON WORKS OR APPROVED EQUIVALENT.

<b>The City of San Marcos</b> Engineering and Capital Improvements	<b>CURRENT AS OF</b> 1/1/2020	<b>SANITARY SEWER RING AND COVER</b> <b>(WAD) 24" - BOLTED</b>
RECORD COPY SIGNED BY  LAURIE MOYER, P.E.	6/5/2014 ADOPTED	THE ARCHITECT/ENGINEER ASSUMES RESPONSIBILITY FOR APPROPRIATE USE OF THIS STANDARD
		<b>503S-3W-SM</b> N.T.S. STANDARD DETAIL