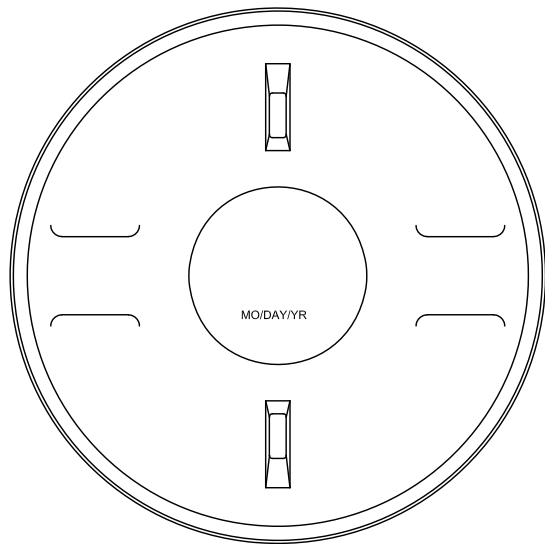
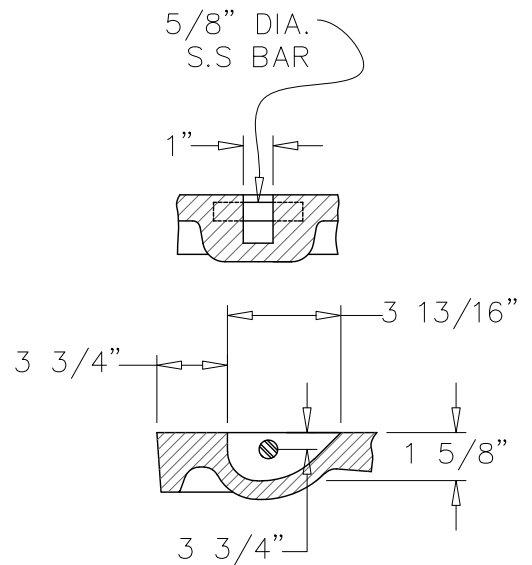


**FRAME AND LID PLAN
VIEW**



LID BOTTOM VIEW



PICKBAR DETAIL

SHT 1 OF 2

The City of San Marcos
Engineering and Capital Improvements

CURRENT AS OF
1/1/2020

**SANITARY SEWER RING AND COVER
(WAD) 24" - UNBOLTED**

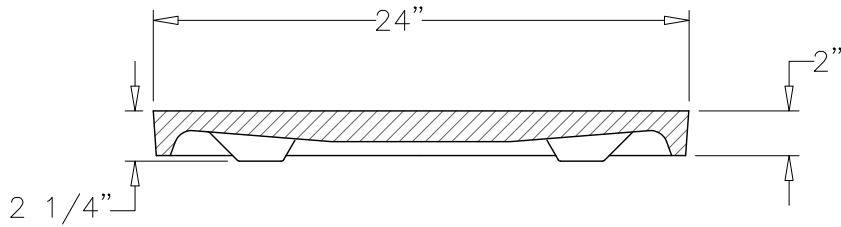
RECORD COPY SIGNED BY

6/5/2014
ADOPTED

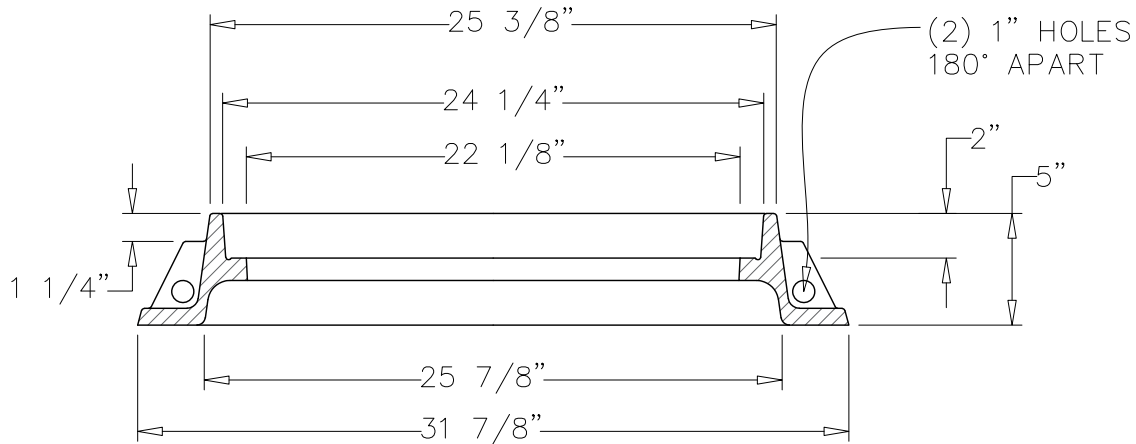
THE ARCHITECT/ENGINEER ASSUMES
RESPONSIBILITY FOR APPROPRIATE
USE OF THIS STANDARD

503S-2W-SM
N.T.S. STANDARD DETAIL

LAURIE MOYER, P.E.



LID CROSS SECTION
SECTION A-A



FRAME CROSS SECTION
SECTION A-A

MATERIALS	
LID	GRAY IRON
FRAME	GRAY IRON

NOTE:

1. THIS DETAIL IS FOR USE IN PUBLIC INFRASTRUCTURE ONLY. PRIVATE INFRASTRUCTURE WILL NOT HAVE CITY OF SAN MARCOS LOGO.
2. COVER SHALL BE EAST JORDAN IRON WORKS OR APPROVED EQUIVALENT.

SHT 2 OF 2

The City of San Marcos Engineering and Capital Improvements	CURRENT AS OF 1/1/2020	SANITARY SEWER RING AND COVER (WAD) 24" - UNBOLTED
RECORD COPY SIGNED BY LAURIE MOYER, P.E.	6/5/2014 ADOPTED	THE ARCHITECT/ENGINEER ASSUMES RESPONSIBILITY FOR APPROPRIATE USE OF THIS STANDARD
		503S-2W-SM N.T.S. STANDARD DETAIL