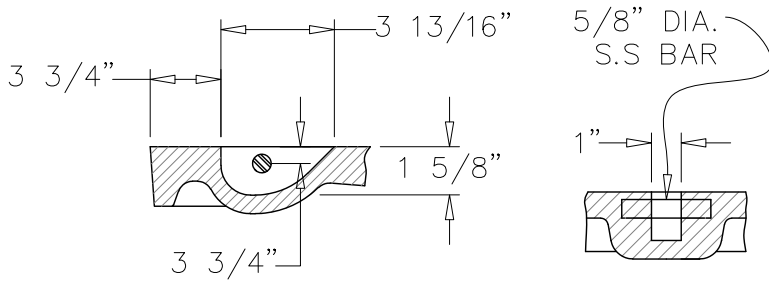


**LID AND FRAME
PLAN VIEW**



PICKBAR DETAIL



CUSTOM LOGO

SHT 1 OF 2

The City of San Marcos
Engineering and Capital Improvements

CURRENT AS OF
1/1/2020

**STORM DRAIN CURB INLET RING AND
COVER 25 5/8" UNBOLTED**

RECORD COPY SIGNED BY

6/5/2014

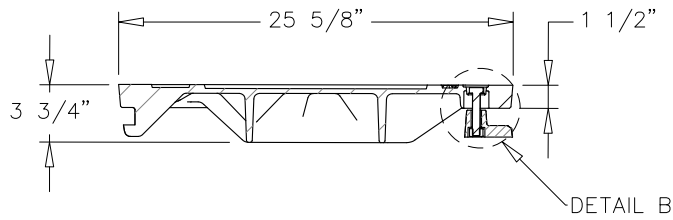
THE ARCHITECT/ENGINEER ASSUMES
RESPONSIBILITY FOR APPROPRIATE
USE OF THIS STANDARD

503S-2S-SM

LAURIE MOYER, P.E.

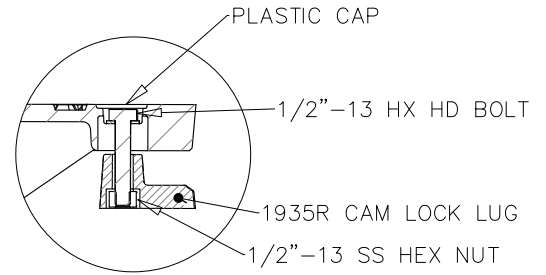
ADOPTED

N.T.S. STANDARD DETAIL

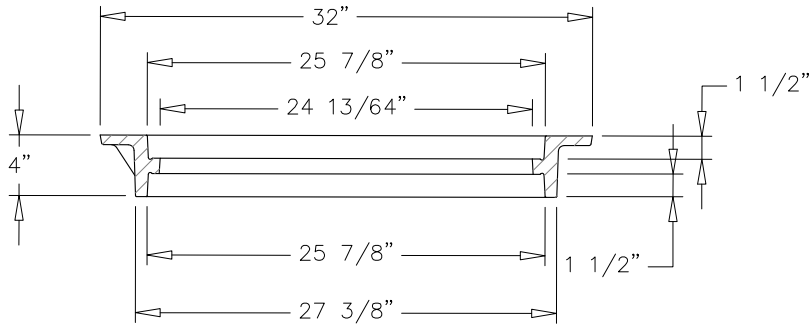


LID SECTION VIEW

SECTION A-A

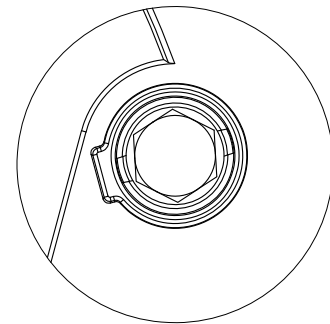


DETAIL B



FRAME SECTION VIEW

SECTION A-A



DETAIL A

MATERIALS	
LID	DUCTILE IRON
FRAME	GRAY IRON

NOTE:

1. THIS DETAIL IS FOR USE IN PUBLIC INFRASTRUCTURE ONLY. PRIVATE INFRASTRUCTURE WILL NOT HAVE CITY OF SAN MARCOS LOGO.
2. COVER SHALL BE EAST JORDAN IRON WORKS OR APPROVED EQUIVALENT.

SHT 2 OF 2

The City of San Marcos
Engineering and Capital Improvements

CURRENT AS OF
1/1/2020

**STORM DRAIN CURB INLET RING AND
COVER 25 5/8" UNBOLTED**

RECORD COPY SIGNED BY

6/5/2014

THE ARCHITECT/ENGINEER ASSUMES
RESPONSIBILITY FOR APPROPRIATE
USE OF THIS STANDARD

503S-2S-SM

LAURIE MOYER, P.E.

ADOPTED

N.T.S. STANDARD DETAIL