



## ANIMAL SERVICES - GENERAL STATISTICS

	FY15	FY16	FY17	FY18 (Oct 1, 2017- Sept 31, 2018)				FY18 Totals	Percent Change
				1st QTR Oct-Dec	2nd QTR Jan-Mar	3rd QTR Apr-Jun	4th QTR Jul-Sept		
<b>Visitors</b>	16641	17388	19875	<b>5257</b>	<b>4597</b>	<b>6642</b>	<b>5348</b>	<b>21844</b>	<b>9.9%</b>
<b>CSR Workers</b>	69	55	86	<b>50</b>	<b>55</b>	<b>58</b>	<b>48</b>	<b>211</b>	<b>145.3%</b>
<b>CSR Hrs worked</b>	704	403	697	<b>289</b>	<b>340</b>	<b>281</b>	<b>313</b>	<b>1223</b>	<b>75.5%</b>
<b>Volunteers - new</b>		103	79	<b>31</b>	<b>16</b>	<b>35</b>	<b>24</b>	<b>106</b>	<b>34.2%</b>
<b>Volunteers-Tot</b>	104	396	409	<b>109</b>	<b>124</b>	<b>88</b>	<b>116</b>	<b>437</b>	<b>6.8%</b>
<b>Vol Hrs worked</b>	2382	1566	1909	<b>543</b>	<b>644</b>	<b>446</b>	<b>517</b>	<b>2150</b>	<b>12.6%</b>
<b>Calls -total incoming</b>	12984	20194	21592	<b>3856</b>	<b>3648</b>	<b>7636</b>	<b>5440</b>	<b>20580</b>	<b>-4.7%</b>
<b>Dispatches-SM</b>	5942	6001	4398	<b>1007</b>	<b>936</b>	<b>1124</b>	<b>1049</b>	<b>4116</b>	<b>-6.4%</b>
<b>Citations</b>	34	44	32	<b>7</b>	<b>10</b>	<b>9</b>	<b>2</b>	<b>28</b>	<b>-12.5%</b>
<b>Bite Cases</b>	266	282	252	<b>63</b>	<b>71</b>	<b>65</b>	<b>64</b>	<b>263</b>	<b>4.4%</b>
<b>Investigations</b>				<b>9</b>	<b>7</b>	<b>9</b>	<b>9</b>	<b>34</b>	<b>0.0%</b>
<b>Pet Licenses Issued</b>	173	147	229	<b>66</b>	<b>53</b>	<b>50</b>	<b>48</b>	<b>217</b>	<b>-5.2%</b>
<b>Microchips Issued</b>	135	196	301	<b>92</b>	<b>41</b>	<b>185</b>	<b>30</b>	<b>348</b>	<b>15.6%</b>
<b>VS Surgery</b>	483	656	809	<b>194</b>	<b>211</b>	<b>266</b>	<b>291</b>	<b>962</b>	<b>18.9%</b>
<b>RTO Rabies Vax</b>	360	368	460	<b>53</b>	<b>88</b>	<b>38</b>	<b>0</b>	<b>179</b>	<b>-61.1%</b>

Compare to FY17:	1st QTR	2nd QTR	3rd QTR	4th QTR	2017 Totals
Visitors	4916	4589	5009	5361	19875
CSR Workers	12	14	19	41	86
CSR Hrs worked	95	129	156	317	697
Volunteers- New	15	25	26	13	79
Volunteers- Tot	137	105	107	60	409
Vol Hrs worked	619	523	485	282	1909
Calls for service	5654	5075	5004	5859	21592
Dispatches	1047	1032	1253	1066	4398
Citations	10	6	6	10	32
Bitecases Investigated	43	69	74	66	252
Pet licenses Issued	42	43	49	95	229
Microchips Issued	42	30	57	172	301
VS Surgery	197	220	182	210	809
RTO Rabies Vax	106	87	93	174	460



# CITY OF SAN MARCOS ANIMAL SERVICES



## FY 18 Animal Intake by Jurisdiction

### Monthly Totals by Jurisdiction:

	Oct.	Nov.	Dec.	Jan.	Feb.	Mar.	April	May	June	July	Aug.	Sept.	Total
San Marcos	225	161	158	143	142	182	232	300	269	226	253	226	2517
Hays	158	181	84	165	147	154	143	161	138	101	112	90	1634
Kyle	62	75	64	73	32	78	85	88	59	57	73	75	821
Buda	12	3	4	2	5	12	6	10	11	5	20	18	108
Out of area	16	2	3	4	5	5	13	9	4	4	6	1	72
<b>TOTALS</b>	<b>473</b>	<b>422</b>	<b>313</b>	<b>387</b>	<b>331</b>	<b>431</b>	<b>479</b>	<b>568</b>	<b>481</b>	<b>393</b>	<b>464</b>	<b>410</b>	<b>5152</b>

\*NOTE: totals include cats, dogs and other

### Quarterly Totals by Jurisdiction:

	San Marcos	Hays County	City of Kyle	City of Buda	Out of Area	Tot					
Q1	544	45%	423	35%	201	17%	19	2%	21	2%	1208
Q2	467	41%	466	41%	183	16%	19	2%	14	1%	1149
Q3	801	52%	442	29%	232	15%	27	2%	26	2%	1528
Q4	705	56%	303	24%	205	16%	43	3%	11	1%	1267
<b>Tot</b>	<b>2517</b>	<b>49%</b>	<b>1634</b>	<b>32%</b>	<b>821</b>	<b>16%</b>	<b>108</b>	<b>2%</b>	<b>72</b>	<b>1%</b>	<b>5152</b>

\*NOTE: totals include cats, dogs and other

Comparison FY17 Animal Intake by Jurisdiction

	Oct.	Nov.	Dec.	Jan.	Feb.	Mar.	April	May	June	July	Aug.	Sept.	Total
San Marcos	294	206	202	205	157	237	206	261	251	238	236	188	2681
Hays	155	138	131	140	150	179	187	216	178	128	162	147	1911
Kyle	83	89	73	73	82	107	73	87	115	107	107	82	1078
Buda	20	27	13	22	11	29	15	21	28	16	11	13	226
<b>Total</b>	<b>552</b>	<b>460</b>	<b>419</b>	<b>440</b>	<b>400</b>	<b>552</b>	<b>481</b>	<b>585</b>	<b>572</b>	<b>489</b>	<b>516</b>	<b>430</b>	<b>5896</b>

\*NOTE: totals include cats, dogs and other, alive and deceased

	San Marcos	Hays County	City of Kyle	City of Buda	Tot				
Q1	702	49%	424	30%	245	17%	60	4%	1431
Q2	599	43%	469	34%	262	19%	62	4%	1392
Q3	718	44%	581	35%	275	17%	64	4%	1638
Q4	662	46%	437	30%	296	21%	40	3%	1435
<b>Tot</b>	<b>2681</b>	<b>45%</b>	<b>1911</b>	<b>32%</b>	<b>1078</b>	<b>18%</b>	<b>226</b>	<b>4%</b>	<b>5896</b>

\*NOTE: totals include cats, dogs and other, alive and deceased

## Cat/Dog Intake by Type FY18

	Oct	Nov	Dec	Jan	Feb	Mar	Apr	May	Jun	July	Aug	Sept	Total
Surr Cats	37	12	31	18	25	11	23	61	37	10	20	18	303
Surr Dogs	145	42	22	75	32	65	51	43	64	45	56	38	678
<b>Total</b>	<b>182</b>	<b>54</b>	<b>53</b>	<b>93</b>	<b>57</b>	<b>76</b>	<b>74</b>	<b>104</b>	<b>101</b>	<b>55</b>	<b>76</b>	<b>56</b>	<b>981</b>

	Surren- Cats	Surren- Dogs	Stray- Cats	Stray- Dogs	Qtr. Tot				
Q1	80	7%	209	17%	294	24%	556	46%	1139
Q2	54	5%	172	15%	205	18%	413	36%	844

	Oct	Nov	Dec	Jan	Feb	Mar	Apr	May	Jun	July	Aug	Sept	Total
Stray-Cats	131	110	53	77	56	72	135	182	145	102	101	118	1282
Stray-Dogs	276	140	140	163	106	144	136	147	99	123	142	270	1886
<b>Total</b>	<b>407</b>	<b>250</b>	<b>193</b>	<b>240</b>	<b>162</b>	<b>216</b>	<b>271</b>	<b>329</b>	<b>244</b>	<b>225</b>	<b>243</b>	<b>388</b>	<b>3168</b>

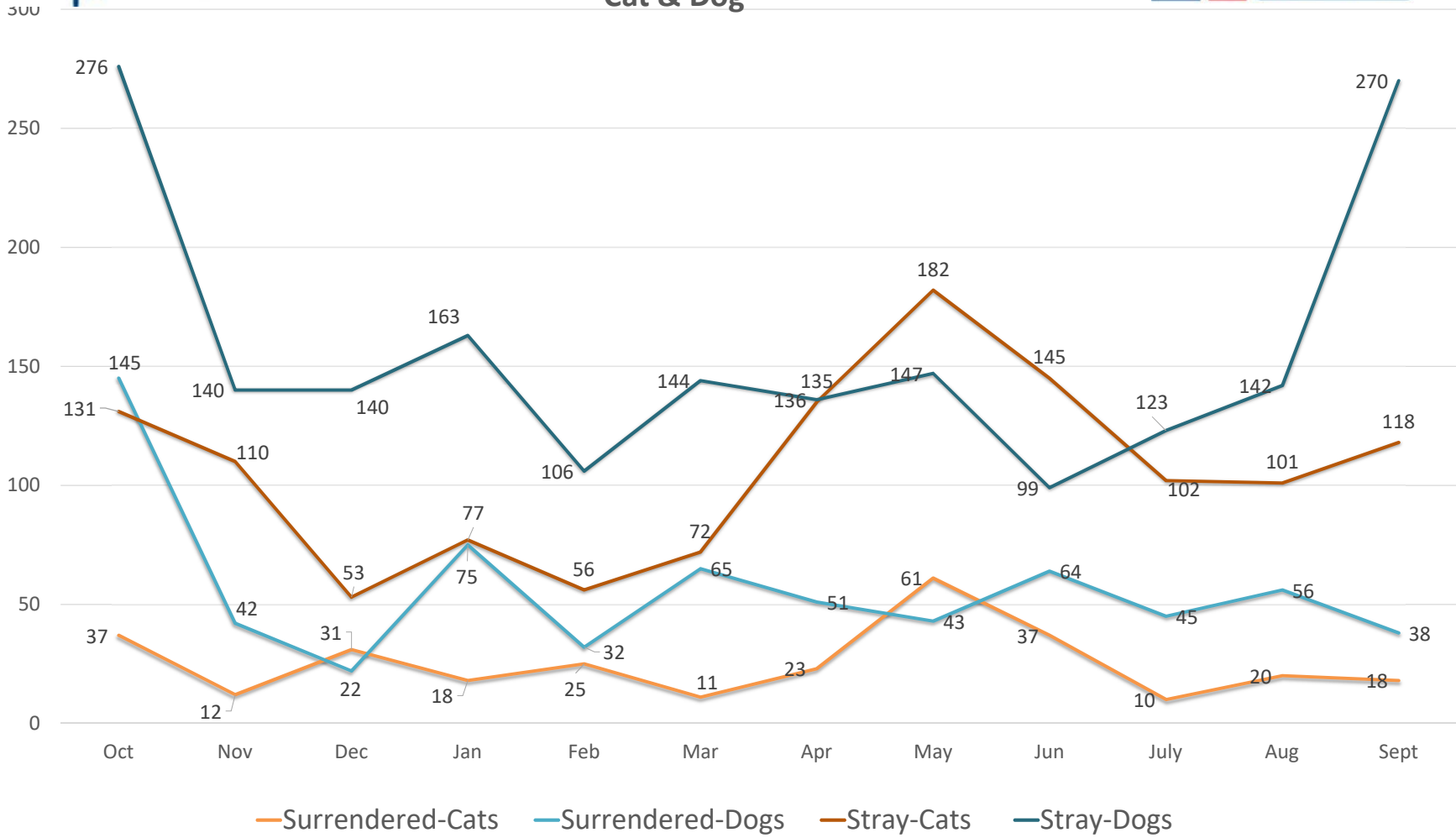
\*Totals reflect cat/dog only w/intake types stray or surrender

	Surren- Cats	Surren- Dogs	Stray- Cats	Stray- Dogs	Qtr. Tot				
Q3	121	8%	158	10%	462	30%	382	25%	1123
Q4	48	4%	139	11%	321	25%	535	42%	1043
<b>Tot</b>	<b>303</b>	<b>6%</b>	<b>678</b>	<b>13%</b>	<b>1282</b>	<b>25%</b>	<b>1886</b>	<b>37%</b>	<b>4149</b>

\*Percentages are reflective of all intake types (stray, surrender, misc)

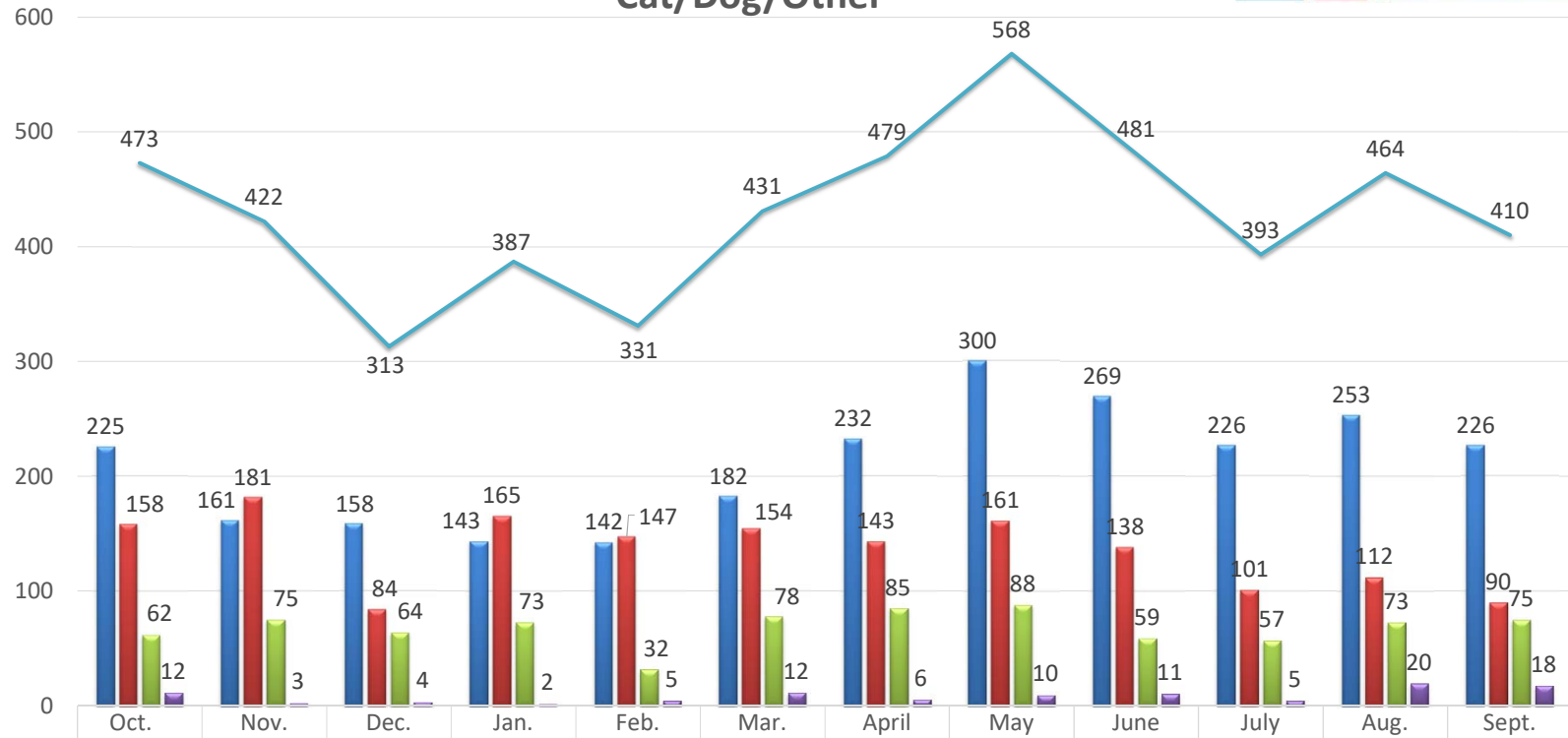


### San Marcos Animal Services FY18 Intake - Stray vs. Owner Surrender Cat & Dog





## San Marcos Animal Services FY18 Intake All Species Cat/Dog/Other



City of San Marcos	225	161	158	143	142	182	232	300	269	226	253	226
Hays County	158	181	84	165	147	154	143	161	138	101	112	90
City of Kyle	62	75	64	73	32	78	85	88	59	57	73	75
City of Buda	12	3	4	2	5	12	6	10	11	5	20	18
TOTALS	473	422	313	387	331	431	479	568	481	393	464	410



## CITY OF SAN MARCOS ANIMAL SERVICES

### SHELTER DISPOSITION FY18



**1ST QTR FY18 From: 10/01/17 to 12/31/2017**

<i>Final Disposition (Outcome)</i>	<i>Cat</i>	<i>%</i>	<i>Dog</i>	<i>%</i>	<i>Totals</i>	<i>%</i>
Adopted	88	22.06%	143	23.83%	231	23.12%
Returned to owner	15	3.76%	175	29.17%	190	19.02%
Transferred	38	9.52%	106	17.67%	144	14.41%
Stolen or Escaped	0	0.00%	0	0.00%	0	0.00%
Died in Facility	0	0.00%	0	0.00%	0	0.00%
DOA (Dead On Arrival)	6	1.50%	3	0.50%	9	0.90%
Euthanized:	252	63.16%	173	28.83%	425	42.54%
<b>Report Totals</b>	<b>399</b>	<b>100%</b>	<b>600</b>	<b>100%</b>	<b>999</b>	<b>100%</b>

57%  
Live Outcome

57.1%

(Cats & Dogs only)



# CITY OF SAN MARCOS ANIMAL SERVICES

## SHELTER DISPOSITION FY18



**2nd QTR FY18 From: 01/01/2018 to 03/31/2018**

<i>Final Disposition (Outcome)</i>	<i>Cat</i>	<i>%</i>	<i>Dog</i>	<i>%</i>	<i>Totals</i>	<i>%</i>
Adopted	41	15.5%	111	16.8%	152	16.43%
Returned to owner	26	9.8%	222	33.6%	248	26.81%
Transferred	120	45.3%	189	28.6%	309	33.41%
Stolen or Escaped	0	0.0%	0	0.0%	0	0.00%
Died in Facility	0	0.0%	5	0.8%	5	0.54%
DOA (Dead On Arrival)	2	0.8%	3	0.5%	5	0.54%
Euthanized:	76	28.7%	130	19.7%	206	22.27%
<b>Report Totals</b>	<b>265</b>	<b>100%</b>	<b>660</b>	<b>100%</b>	<b>925</b>	<b>100%</b>

**77%  
Live Outcome**

**77.1%**

(Cats & Dogs only)



# CITY OF SAN MARCOS ANIMAL SERVICES

## Shelter Disposition FY18



**3RD QTR FY18 From: 4/01/2018 to 6/30/2018**

<i>Final Disposition (Outcome)</i>	<i>Cat</i>	<i>%</i>	<i>Dog</i>	<i>%</i>	<i>Totals</i>	<i>%</i>
Adopted	90	17.8%	174	29.5%	264	24.1%
Returned to owner	30	5.9%	182	30.8%	212	19.3%
Transferred	237	46.8%	122	20.7%	359	32.8%
Stolen or Escaped	0	0.0%	0	0.0%	0	0.0%
Died in Facility	9	1.8%	5	0.8%	14	1.3%
DOA (Dead On Arrival)	1	0.2%	2	0.3%	3	0.3%
Euthanized:	139	27.5%	105	17.8%	244	22%
<b>Report Totals</b>	<b>506</b>	<b>100%</b>	<b>590</b>	<b>100%</b>	<b>1096</b>	<b>100%</b>

**76%  
Live  
Outcome**

**76.4%**

**Out**  
(Cats/Dogs in 1215)



# CITY OF SAN MARCOS ANIMAL SERVICES



## Shelter Disposition FY18

**4th QTR FY18 From: 07/01/18 to 9/30/2018**

<i>Final Disposition (Outcome)</i>	<i>Cat</i>	<i>%</i>	<i>Dog</i>	<i>%</i>	<i>Totals</i>	<i>%</i>	<i>Live Outcome Rate</i>	<i>% Diff</i>
Adopted	181	45.3%	204	34.6%	385	38.9%	82.2%	196%
Returned to owner	6	1.5%	184	31.2%	190	19.2%		9%
Transferred	112	28.0%	112	19.0%	224	22.6%		4%
Stolen or Escaped	0	0.0%	0	0.0%	0	0.0%		-100%
Died in Facility	17	4.3%	9	1.5%	26	2.6%		73%
DOA (Dead On Arrival)	13	3.3%	5	0.8%	18	1.8%		260%
Euthanized:	71	17.8%	76	12.9%	147	14.8%		-72%
<b>Report Totals</b>	<b>400</b>	<b>100.0%</b>	<b>590</b>	<b>100.0%</b>	<b>990</b>	<b>100.0%</b>		

(cats & dogs)





## CITY OF SAN MARCOS ANIMAL SERVICES



### END OF YEAR REPORT- FY18

**FY18 From: 10/01/2017 to 09/30/2018**

<i>Final Disposition (Outcome)</i>	<i>Cat</i>	<i>%</i>	<i>Dog</i>	<i>%</i>	<i>Totals</i>	<i>%</i>	<i>Live Outcome Rate</i>	<i>% Diff</i>
Adopted	400	25.5%	632	25.9%	1032	25.7%	73.2%	54%
Returned to owner	77	4.9%	762	31.2%	839	20.9%		-9%
Transferred	507	32.3%	529	21.7%	1036	25.8%		23%
Stolen or Escaped	0	0.0%	0	0.0%	0	0.0%		-100%
Died in Facility	26	1.7%	19	0.8%	45	1.1%		-10%
DOA (Dead On Arrival)	22	1.4%	13	0.5%	35	0.9%		-68%
Euthanized:	538	34.3%	484	19.8%	1022	25.5%		-50%
<b>Report Totals</b>	<b>1570</b>	<b>100%</b>	<b>2439</b>	<b>100%</b>	<b>4009</b>	<b>100.0%</b>		

(cats & dogs)